



PEZZOL

CATALOG 2023



The background of the image is a construction site, showing a large crane and a building under construction with many vertical rebar rods. The entire image is overlaid with a semi-transparent orange color. The text is positioned in the lower right quadrant of the image.

**THE
MADE IN ITALY
SAFETY
SHOE**



INDEX

PEZZOL INDUSTRIES	8
BRAND COMPONENTS	10
SOLES	12
INSOLES	16
TECNOLOGIE & COMPONENTS	18
MATERIALS	20
STANDARD & INFO	22
TYRE GREEN	26
RACING ALU	30
X-WEAVE	44
TYRE FIBERGLASS	48
TYRE HRO FIBERGLASS	54
TARGET SUB-ZERO	56
RAPTOR & RAPTOR HRO	60
ICON HRO	64
ICON FIBER GLASS	68
HYBRID SPECIAL	76
VINTAGE HRO COMPO	82
FOOD & CHEMICAL	86
ZETA BASIX	90
RESCUE	98
SELECTION GUIDE	101
LAB	112
INSTRUCTION FOR USE	114
MERCHANDISING	116





PRODUCTS AND MORE:

PEZZOL.COM

FACEBOOK.COM/PEZZOL

IG: PEZZOL.OFFICIAL

LINKEDIN.COM/PEZZOLINDUSTRIESRL

Pezzol Industries

The Pezzol shoe factory was founded in 1947 on the intuition of its founder Giuseppe Piazzolla.

With the help of Italian craftsmen, they were the first to commit their skills to the manufacture of work footwear for industrial use.

Today, the key formula of the Pezzol industry is the full expression of 'made in Italy', i.e. of 'beautiful and well-made' that indissolubly merges Tradition and Innovation.

The knowledge of craftsmen refines a product created by the most modern technologies, while the intelligence of the hands offers sensitivity and emotion to industrial processes.

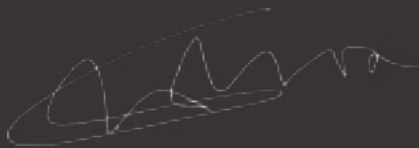
Over the years, the Pezzol DNA has been developed that finds its maximum synthesis in the sobriety of the products, in the maximum technological value and innovation, in the protection of the end user and in compliance with current regulations and international standards.

The family history continues. The same dedication and long-term vision that has contributed to the company's success over its 70 years of existence is also cultivated by the third generation:

Giuseppe and Michele have taken up the challenges of the third millennium, the digital and multicultural world.

Dott. Giuseppe Piazzolla

Sole Director





Founded in 1947



Active for 3 generations



Design Awarded



R&D



Environmental Support



More than 6000 customers



Controlled flow



Customer culture



International Distribution



Reliable shipping



gore-workwear.com

HIGH CLIMATE COMFORT

The GORE-TEX membrane – the core hidden secret of GORE-TEX Footwear offers high climate comfort in all working weather conditions. It keeps out water while getting rid of sweat, because the membrane's pores are 20.000 times smaller than water drops but 700 times larger than molecular steam. This unique combination provides durable waterproofness and high breathability. GORE-TEX Footwear keeps your feet dry and comfortable



BREATHABILITY

The materials used in GORE-TEX footwear achieve a breathability value up to six times higher than the values specified in EN ISO 20345/47.

- ESTERNAL MATERIAL
- PROTECTIVE MAGLIN
- GORE-TEX MEMBRANE
- LINING

PROVEN QUALITY UNDER UNCOMPROMISING TEST CONDITIONS.



DURABLE WATERPROOFING

Each pore of the GORE-TEX membrane is 20,000 times smaller than a drop of water.

Each pore of the GORE-TEX membrane is 700 times larger than a molecule of water vapour.

GORE-TEX footwear must withstand up to 300,000 bending movements (80 hours) in water at ankle height, without a single drop of water penetrating inside the shoe.

The EN ISO 20344 standard requires only 4,800 bending movements (80 minutes) and 3 cm² water penetration is permitted.

DURATION

The lining and upper materials of GORE-TEX footwear must withstand up to four times the abrasion movements specified in EN ISO 20345.

BOA®



THE BOA® FIT SYSTEM

Delivering fit solutions built to perform, the BOA FIT SYSTEM features products in several industries (medical, sport and workwear). It consists of three components: micro-adjustable dial, light super-strong lace and low friction lace guide.

Each unique configuration is engineered for effortless precision delivering a connected, fast, customized and durable fit, and is backed by the BOA Guarantee.



MICRO ROTELLA
AGGIUSTABILE

GUIDE A BASSA
FRIZIONE

LACCI LEGGERI
EXTRA-FORTI

FIT FOR LIFE WITH BOA®

THE BOA® FIT SYSTEM DIALS AND LACES ARE GUARANTEED FOR THE LIFETIME OF THE PRODUCT ON WHICH THEY ARE INTEGRATED.

HOW IT WORKS



PUSH TO
FIX



TURN
TO TIGHTEN



PULL
TO RELEASE



FIRE & ICE

VIBRAM®

Sole created for "critical" work environments.

The performance of the Vibram sole is the perfect combination between hyper-functional design and exclusive rubber compounds.

VIBRAM® produces high performance soles to satisfy all usage needs. Reliability and stability on irregular grounds. Resistance to oils and hydrocarbons, heat contact, extreme temperatures and maximum durability and flexibility.

OUR VIBRAM® SOLES

ICON RUBBER VIBRAM® Fire&Ice

- High performance compound
- Flexibility and traction down to -23°C.
- Designed to resist extreme temperatures
- High slip resistance with cold

ICON RUBBER VIBRAM®

- Maximum support and stability in harsh environments
- Developed to provide maximum durability and protection
- Wide, profiled, slip-resistant waist area

TYRE RUBBER VIBRAM®

- High slip-resistance to oils on all surfaces
- Optimized cleated profile to guarantee lightness and durability
- The S-Line design facilitates movements while walking

VINTAGE RUBBER VIBRAM®

- Energy absorption at the heel part
- High grip and durability
- Maximum adherence to the ground



SOLES



ICON PU-RUBBER VIBRAM® FIRE&ICE



Two-component PU/Vibram® Fire&Ice rubber sole, developed to provide grip and stability, to withstand low and high temperatures. The special rubber compound offers flexibility and grip even at temperatures below zero (tested down to -23°C); the Vibram Fire&Ice sole can be used for any outdoor activity, where the grip must be maintained in adverse weather conditions. Slip-resistance sole tested to the SATRA laboratories on metal grating (Kennedy Grating Test) and wooden scaffold boards (Scaffold Board Test).



ICON PU-RUBBER VIBRAM®



Two-component PU/Vibram® rubber sole, guarantees maximum grip and stability on difficult uneven grounds. Developed for the use of crampons, the cleated waist area increases the grip on ladders. Resistance to contact heat HRO, oils and hydrocarbons. Slip-resistance sole tested to the SATRA laboratories on metal grating (Kennedy Grating Test) and wooden scaffold boards (Scaffold Board Test).



TYRE PU-RUBBER VIBRAM®



The Vibram® Rubber compound in combination with the Polyurethane midsole, guarantees lightness, flexibility and high abrasion resistance. The antistatic properties and heat resistance HRO establish a perfect high-performance sole for all industrial areas. Antistatic sole with sporty and dynamic design.



VINTAGE PU-RUBBER VIBRAM®



Two-component sole made by direct injected PU midsole and Vibram® Rubber HRO heat resistance sole up to 300°C for 60" according to European standards. The wide sole promotes stability, while the profiled channels ensure quick discharge of water and oils.

HYBRID PU-RUBBER

Two-component PU/Rubber sole developed to offer maximum performance in terms of safety and comfort. Excellent resistance to oils, hydrocarbons and slip. HRO heat contact resistant up to 300°C for 60" according to European standards. Slip-resistance sole tested to the SATRA laboratories on metal grating (Kennedy Grating Test) and wooden scaffold boards (Scaffold Board Test). Available also with Ice Grip compound.



ICON DUAL DENSITY PU

Dual density polyurethane sole designed for excellent performance either on humid or dry grounds. Through the increased cleats and channels spread over the entire sole surface, it discharges liquids and waste by increasing stability. Antistatic, with shock absorption cell in the heel area, this sole has been tested for slip-resistance in the SATRA laboratories on metal grating (Kennedy Grating Test) and wooden scaffold boards (Scaffold Board Test).



TYRE DUAL DENSITY PU

The Tyre dual density PU sole is light and sporty. Thanks to the Smart Injection Technology, it guarantees excellent flexibility and durability together with slip and abrasion resistance.



SOLID DUAL DENSITY PU

The light and flexible dual Density sole made of PU-compounds Esolight 1.0 and 2.0: the midsole made of low density micro-cells increases energy absorption, while the higher density of the outsole guarantees maximum durability and slip resistance.



TYRE DUAL DENSITY PU/TPU

TYRE sole is made of comfortable PU midsole and TPU tread. Resistant to heat contact with materials up to a temperature of 120°C.

TPU is an extremely wear-resistant thermoplastic material. TPU makes it possible to make soles with outstanding mechanical and especially aesthetic characteristics. The ability not to oxidize, being more flexible than any thermoplastic material, abrasion resistance.

Tyre TPU soles, thanks to the special formulation according to the mechanical characteristics of the final product, guarantee maximum flexibility at the point where the shoe bends, i.e. when working on the knees, for greater freedom of movement.



PEZZOL

INSOLE BUBBLE



TECHNICAL ADVANTAGES



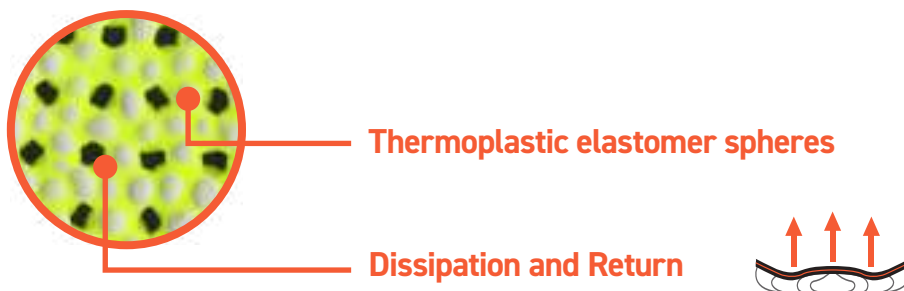
DISSIPATION AND ENERGY RETURN - Insole made of soft polyurethane foam with dispersion of thermoplastic elastomer spheres.

The polyurethane provides lift and anatomically accommodates the foot.

The TPE allows energy dispersion under stress.

The shape and the presence of holes in the sole allow constant air circulation.

The shape and the presence of holes in the sole allow constant air recycling.



INSOLES



B-01

DISSIPATION AND RETURN



DISSIPATION AND ENERGY RETURN - Insole made of soft polyurethane foam with dispersion of thermoplastic elastomer spheres. The polyurethane provides lift and anatomically accommodates the foot. The TPE allows energy dispersion under stress. The shape and the presence of holes in the sole allow constant air circulation. The shape and the presence of holes in the sole allow constant air recycling.

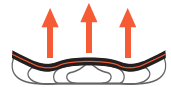
- CUSHIONING
- SHOCK ABSORPTION
- DURABILITY
- BREATHABILITY

1. Anatomical insole for greater comfort
2. High load-bearing foam = energy dissipation and return
3. Fully lined with conductive micro-perforated fabric to reduce wear and tear



T-01

DISSIPATION AND RETURN



DISSIPATION AND ENERGY RETURN - Anatomical insole with high load-bearing capacity made of open-cell conductive polyurethane foam. The special cell structure guarantees a shock-absorbing and anti-fatigue effect capable of restoring energy to the foot during walking without excess load.

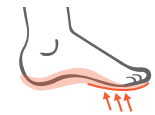
- CUSHIONING
- SHOCK ABSORPTION
- DURABILITY
- BREATHABILITY

1. Anatomical insole for greater comfort
2. High load-bearing foam = energy dissipation and return
3. Fully lined with conductive micro-perforated fabric to reduce foam wearing



I-01

SUPPORT AND THERMAL REFRACTION



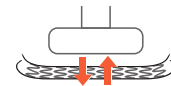
SUPPORT AND THERMAL REFRACTION - Anatomic insole made of open-cell polyurethane foam. Absorb-shock heel area and arch support. Antistatic, breathable and antibacterial. The upper layer is coated with a highly abrasion-resistance polyester fabric, while the underneath toe area is coated with a no-dissipating aluminium foil that keeps the heat into the shoe.

- CUSHIONING
- SHOCK ABSORPTION
- DURABILITY
- BREATHABILITY



V-01

MAXIMUM RESISTANCE



MAXIMUM RESISTANCE - Anatomic insole made of soft polyurethane foam. Maximum resistance and durability. Perforated front part, with a ripped design to improve breathability. Integrated shock absorber at the heel area. Highly abrasion-resistant polyester lining. Antistatic.

- CUSHIONING
- SHOCK ABSORPTION
- DURABILITY
- BREATHABILITY

1. Maximum resistance and durability
2. Air circulation system for better breathability
3. Perforated front part, with a ripped design to improve breathability



CONSTANT MICROCLIMATE

H-02

CONSTANT MICROCLIMATE - Perfectly combined insole made of three functional layers to guarantee constant comfort and microclimate in extreme weather conditions. The high-density latex foam provides a cushioning effect, while the outer anti-slip layer ensures extreme adhesion to the upper material. Coated with lambswool, the insole is ideal in below zero climates.

- CUSHIONING
- SHOCK ABSORPTION
- DURABILITY
- BREATHABILITY

1. Anatomical insole for greater comfort
2. High load-bearing foam = energy dissipation and return
3. Fully lined with conductive micro-perforated fabric to reduce foam wearing



ABSORBANCE INTEGRATED

H-01

INTEGRATED CUSHIONING - Anatomic insole created with continuous channels for correct breathability in the shoe. The structure made of light and elastic EVA, combined with the anatomical shape, guarantees stability while walking. Thanks to the integrated shock-absorber at the heel area, the risk of injury is reduced. Abrasion resistant polyester lining for maximum durability.

- CUSHIONING
- SHOCK ABSORPTION
- DURABILITY
- BREATHABILITY

1. Breathable and antistatic
2. Shock absorption cell
3. Anatomic insole for better walking comfort



EXCELLENT BREATHABILITY

S-02

EXCELLENT BREATHABILITY - The insole is made of high-supporting EVA material which absorbs shocks while walking, making it comfortable. The shape has been designed in such a way that the weight pressure is equally distributed, avoiding overloads; While the special honeycomb design maximizes shock absorption and increases breathability. The insole is antistatic and anatomic, fully lined with antibacterial polyester fabric.

- CUSHIONING
- SHOCK ABSORPTION
- DURABILITY
- BREATHABILITY

1. Antibacterial
2. Perforated polyester fabric = maximum breathability
3. Honeycomb design for shock absorption and breathability



COMFORT AND LIGHTNESS

S-01

COMFORT AND LIGHTNESS - Anatomic insole made of soft polyurethane foam. Extra light structure. Shock-absorber at the heel area and arch foot support. Highly abrasion resistant polyester lining. Antistatic

- CUSHIONING
- SHOCK ABSORPTION
- DURABILITY
- BREATHABILITY

1. Ultralight
2. High abrasion resistant fabric
3. Anatomic insole for better comfort



Technologies and Components



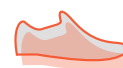
X-WEAVE



High-performance material that combines the latest polyester and polyamide fabrics technologies. A special developed and manufactured fiber for seamless shoes. A one-piece upper with different textures for different functional areas. Extremely flexible, breathable, tearing and abrasion resistant.



OVERWELDING



OVERWELDING

Seamless technology that binds different upper materials, like PU or Microtech, through high frequency welding process. That creates a one-piece upper with several functional areas.



TPU PROTECTIVE ELEMENT



TPU elements are applied on the back and front of the shoe, so to give better protection from impacts, frictions and liquids on the upper material.



SBX SYSTEM



The SBX TPU stabilizer is designed to hold the ankle and ensure perfect balance control while walking. This provides stability, comfort and protection on irregular surfaces.



ICE GRIP



Special Rubber compound that guarantees flexibility and comfort at low temperatures. The Ice Grip soles are made with additional fibers that help draining and absorbing liquids on icy surfaces, so to guarantee slip resistance.



ESOLIGHT



Exclusive super flexible system made of dual density polyurethane Esolight 1.0 + 2.0. The Esolight 1.0 midsole is made of lower density micro-cell polyurethane so to increase energy absorption, while the outsole is made of high-density Esolight 2.0 polyurethane to guarantee durability and slip resistance.



SMART INJECTION



Innovative PU injection that gives back soles with different molecular density while keeping a low thickness of the Esolight 2.0 sole layer. Thus resistance and durability of the sole matches lightness and flexibility.

Technologies and Components



PZX E PZ88



The extremely light, non-magnetic and sportive design fiberglass toe caps for maximum mechanical performance, in compliance with EN 12568 requirements. The impact and compression test results meet and even exceed the requirements of the European and International regulations. These toe caps keep their characteristics unaffected even when stressed with the "aging" test and high temperature variations, thus resisting in all conditions for years.



COMPO200



The polymeric toe cap resists to impact up to 200J according to EN 20345. Light, non-magnetic and thermal insulating for higher foot protection.



ALU200



The aluminium toe cap resists to an impact up to 200J. The reduced thickness of the material guarantees maximum comfort, thanks to increased inner space and lightness compared to steel caps.



STEEL



The stainless-steel toe cap offers higher protection performance than required by the EN 20345 Standard. Corrosion-resistant treatments ensure constant protection and long-lasting durability.



TX ZERO



The Puncture Resistant midsole made of multi-layer textile material complies with the current standard EN 12568. TxZero guarantees maximum protection, flexibility and comfort. Antistatic, non-magnetic and thermal insulating.



INOX

Puncture resistant steel midsole guarantees protection and safety in accordance with the current EN 12568 standard.

Materials

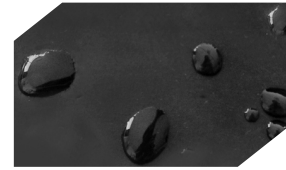
ULTIMATE

Best full grain leathers selected for their high breathability and water resistance, thanks to the compact fiber structure. These leathers are used for GORE-TEX items and must meet higher requirements than EN ISO 20345 standards, indeed they are tested directly into GORE-TEX labs.



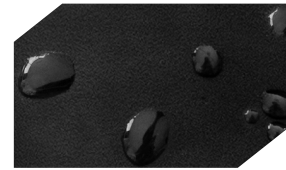
SUPREMOIL

Full grain leather with high breathability. The tanning process with mineral salts gives softness and resistance, which guarantees resistance to oils and hydrocarbons.



IDROTECH

Full grain leather with high water resistance properties. The tanning process with mineral salts gives excellent softness and resistance, which guarantees breathability and durability against oils and hydrocarbons.



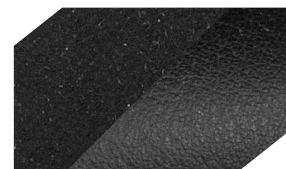
VELOURTECH

An exceptional soft and breathable leather. The leather natural structure has been upgraded by a tanning in barrels with salts and oils that provides greater tightness and excellent abrasion resistance making its fibers tighter.



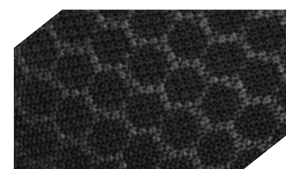
MICROTECH

Thinner than human hair, this extremely breathable and high-tensile microfiber consist of nylon fibers combined with PU through a coagulation process. That provides extended durability, tear and bending strenght.



TX-MICRO

Technical fabric combined with a resistant and breathable microfiber. An innovative material that gives a sporty look with the same performance as leather in terms of tear resistance and comfort.



Materials



PU TEK HYPERTEK

Upper fabric with exceptional abrasion resistance: over 1 million cycles in humid condition compared to the 51.200 cycles required by the European regulation. Astonishing performance in terms of flexibility, lightness, breathability and water resistance.



X-LEATHER

Reinforced upper material with polyurethane multi-layer, for harsh environments that require high abrasion, water and oil resistance.



THINSULATE®

Lightweight and thin lining material for outstanding thermal insulation, that keeps the feet warm in extreme weather conditions. The breathable synthetic fibers help not to disperse heat while maintaining a constant microclimate even below the zero. Available in different weights 200/400/600.



WINTHERM®

Breathable lining textile made with aluminium microfilm to ensure an ideal foot temperature in winter safety shoes. Antistatic and antibacterial.



EXOTECH

Exotech is a woven / non-woven fabric made with nylon fibers. The outcome is a breathable shoes with excellent sweat control and high abrasion resistance.



SPYDER-NET

Lining material top-performing in moisture conditions. Its three-dimensional material shapes around the feet and "memorize" it, providing excellent comfort with no compromises on breathability and flexibility.



Standard & Info

CE EN ISO 20345

CE EN ISO 20347

Categoria	Category	Category (without Toecap)
SB	Basic requirements for safety shoes: toecap resistant to an impact of 200 Joules and compression of 15kN	0B
S1	Basic requirements + - Closed heel area - Antistatic - Emery absorption at the heel part - Fuel oil resistant sole	01
S1P	S1 + - Perforation resistance	01P
S2	S1 + - Resistance of the shoe upper to water penetration	02
S3	S2 + - Perforation resistance - Cleated outsole	03

ADDITIONAL REQUIREMENTS TO SPECIFIC APPLICATIONS AND RELEVANT MARKING SYMBOLS

Symbol	Requirements	
A	Antistatic	Whole shoe
C	Conductive footwear	Whole shoe
E	Energy absorption at the heel part	Whole shoe
FO	Fuel oil resistance sole	Outsole
P	Fuel oil resistance sole	Whole shoe
CI	Cold insulation of the sole	Whole shoe
HI	Heat insulation of the sole	Whole shoe
WR	Water resistance	Whole shoe
HRO	Heat resistant outsole	Outsole
WRU	Water penetration resistant upper	Upper
AN	Ankle protection	Whole shoe
CR	Cut resistance	Whole shoe
M	Metatarsal protection	Whole shoe

SIZE CONVERSION CHART

EU	35	36	37	38	39	40	41	42	43	44	45	46	47	48	49	50
UK	2.5	3	4	5	6	6.5	7	8	9	9.5	10	11	12	13	14	15
US	3.5	4	5	6	7	7.5	8	9	10	10.5	11	12	13	14	15	16

Standard & Info

SRC CERTIFICATION

Marking	Surface	Lubrificant	Coefficient of adhesion: flat surface requirements	Coefficient of grip: heel requirements
SRA	Ceramic plates	Sodium lauryl sulfate	0.32	0.28
SRB	Steel plates	glycerin	0.18	0.13
SRC	Meets the requirements of the two tests mentioned above (SRA + SRB)			

ADDITIONAL TEST: KENNEDY GRATING SLIP TEST AND SCAFFOLD BOARD TEST

Slip resistance is an important feature of safety shoes. To be sure our products are safe in all conditions and environments, and increase their level of protection, shoes are additionally tested with the Kennedy Grating Slip Test and Scaffold Board Test. They requires speci c surfaces to try out slip resistance of the shoe:

- metal for Kennedy Grating Test
- wood for Scaffold Board Test

The test consists of measuring the coef cient of friction between outsole and the surfaces in dry and wet conditions.

These speci c tests, although not mandatory, qualify our products performances above the European standards, and boost the safety level, thus our customers satisfaction.



ICONE PEZZOL



A ANTISTATIC



M METATARSAL PROTECTION



P PERFORATION RESISTANCE



CI COLD INSULATION OF THE SOLE



IMPACT AND COMPRESSION RESISTANCE UP TO 200 JOULES



HI HEAT INSULATION OF THE SOLE



E ENERGY ABSORPTION AT THE HEEL PART



HRO HEAT RESISTANT OUTSOLE



FO FUEL OIL RESISTANCE SOLE



ESD LOW ELECTRICAL RESISTANCE FOOTWEAR



WRU WATER PENETRATION RESISTANT UPPER



FOOTWEAR WITHOUT METAL COMPONENTS



WR WATER RESISTANCE



FOOTWEAR ACCORDING TO DGVU 112-191 REGULATION



DIELECTRIC FOOTWEAR ACCORDING TO THE ASTM STANDARD

DGUV 112-191

Safety footwear is an engineered system in which every component is inserted and tested according to CE EN ISO 20345. Even the removable footbed is part of the certified product and cannot be replaced with any other insole.

To meet the needs of workers who require special orthopaedic measures, Pezzol Industries has certified many of its footwear according to the guidelines of the DGUV 112-191 regulation in both S3 and S1P class.



DGUV 112-191 STATES THAT IF A WORKER NEEDS AN ORTHOPAEDIC FITTING FOR A PAIR OF SAFETY SHOES, HE/SHE MAY DO SO, PROVIDED THAT THE FOOTWEAR MAINTAINS ALL THE REQUIREMENTS OF EN ISO 20345/6/7

Work footwear approved to these directives allows the use of special orthopaedic insoles or orthopaedic supports that maintain the requirements of EN ISO 20345. This results in checks by an accredited laboratory, which issues a specific certificate following a series of successful tests.

Although the regulations of DGUV 112-191 are of German origin and only legally valid in this country, they are currently the only ones that exist at European level and have established themselves as a standard for all member states.



WORKERS IN NEED OF SAFETY FOOTWEAR CERTIFIED ACCORDING TO DGUV 112-191 SHOULD FIRST CONSULT THEIR ORTHOPAEDIST, WHO WILL PRESCRIBE THE MOST SUITABLE SUPPORT IN RELATION TO THE PROBLEM DISCOVERED.

PEZZOL

TYRE GREEN



SUMATRA

269U-007
S3 ESD SRC

NEW

Tyre Green is the new and innovative product line created by Pezzol Industries to respond to the ever growing demand for attention to the future of our world.

Pezzol Industries, an ISO 14001 company since 2006, has now imprinted in its DNA research aimed at improving the environmental impact of its processes, to preserve not only the Italian ecosystem, but the entire planet.

The company's environmental policy has led to the creation of a line of safety footwear certified EN 20345, with components made from 30% recycled materials. The design has been optimised to reduce production waste by 30% compared to footwear standards, while the entire production process is functionalised and geared towards reducing energy impact and CO2 emissions by 20%.

The TYRE GREEN line represents the first concrete step in the evolution of safety footwear towards a model of circular green economy, a worldwide challenge in which Pezzol does not want to be a spectator but an absolute protagonist because:



- 30% in waste production



- 20% in energy consumption



- 30% in the use of raw materials

SUMATRA

S3

269U-007



NEW

UPPER - PU Tek durable, breathable and water-repellent fabric **recycled** + X-leather

LINING - Spyder-Net three-dimensional fabric

SOLE - Tyre Pu dual density SRC

TOECAP - Aluminium Alu200

ANTI-PUNCTURE - Txzero textile insert **recycled**

STANDARD - EN ISO 20345:2011

INSOLE - B-01 SIZE - 35-49

S3 ESD SRC



Antistaticity



Puncture resistance



Toecap resistant to an impact of 200 joules and compression of 15 kN



Energy absorption at the heel



Hydrocarbon resistant outsole



Upper resistance to water penetration and absorption

TONGASS

S3

248U-003



NEW

UPPER - PU Tek durable, breathable and water-repellent fabric **recycled** + X-leather

LINING - Spyder-Net three-dimensional fabric

SOLE - Tyre Pu dual density SRC

TOECAP - Aluminium Alu200

ANTI-PUNCTURE - Txzero textile insert **recycled**

STANDARD - EN ISO 20345:2011

INSOLE - B-01 SIZE - 37-48

S3 ESD SRC



Antistaticity



Puncture resistance



Toecap resistant to an impact of 200 joules and compression of 15 kN



Energy absorption at the heel



Hydrocarbon resistant outsole



Upper resistance to water penetration and absorption

GOBLIN

S3

247U-007



NEW

UPPER - PU Tek durable, breathable and water-repellent fabric **recycled** + X-leather

LINING - Spyder-Net three-dimensional fabric

SOLE - Tyre Pu dual density SRC

TOECAP - Aluminium Alu200

ANTI-PUNCTURE - Txzero textile insert **recycled**

STANDARD - EN ISO 20345:2011

INSOLE - B-01 SIZE - 37-48

S3 ESD SRC



Antistaticity



Puncture resistance



Toecap resistant to an impact of 200 joules and compression of 15 kN



Energy absorption at the heel



Hydrocarbon resistant outsole



Upper resistance to water penetration and absorption

PEZZOL



TONGASS
248U-003 S3 ESD SRC

PEZZOL

RACING ALU



PYTHON
269U-003 S3 SRC

NEW

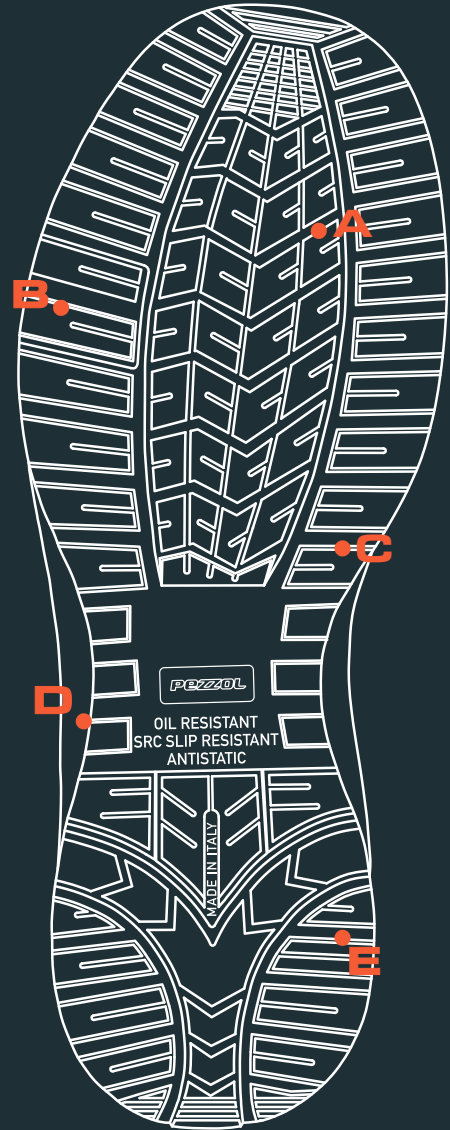
The **Racing Alu** line with its sporty and light design recalls the world of motor racing, reinterpreted for safety. Aluminium protective toe cap designed to guarantee maximum lightness and extreme comfort. Materials carefully selected to offer high performance, such as the uppers in PU Tek: a highly breathable fabric with exceptional resistance to abrasion. Lightness, flexibility and technology are the key words that describe this collection.

Racing Alu is suitable for:

- Automotive
- Light industry
- Energy and maintenance
- Logistics and transport.

TYRE PU/DUAL DENSITY OUTSOLE

- A** Fuel oil resistant sole (FO)
- B** Excellent abrasion resistance
- C** Antistatic sole (A) according to EN ISO 20345:2011 standard
- D** Cleated sole profile for Excellent abrasion resistance maximum adherence to the ground
- E** Lightness and comfort thanks to Smart Injection technology



Slip resistance requirements - SRC

in compliance with the EN ISO 20345:2011 according to the method EN 13287:2012



INDIAN COBRA

S1P

269U-009



S1P SRC

UPPER - *Leather* + three-dimensional fabric with honeycomb structure for maximum breathability

LINING - *Spyder-Net* three-dimensional fabric

SOLE - *Tyre Pu dual density SRC*

TOECAP - *Aluminium Alu200*

ANTI-PUNCTURE - *Txzero* textile insert

STANDARD - EN ISO 20345:2011

INSOLE - *B-01* **SIZE** - *35-49*



Antistaticity



Puncture resistance



Impact and compression resistance up to 200 joules



Energy absorption at the heel



Hydrocarbon resistant outsole

BLACK MAMBAS

S3

269U-005



S3 ESD SRC

UPPER - *PU Tek* durable, breathable and water-repellent fabric

LINING - *Spyder-Net* three-dimensional fabric

SOLE - *Tyre Pu dual density SRC*

TOECAP - *Aluminium Alu200*

ANTI-PUNCTURE - *Txzero* textile insert

STANDARD - EN ISO 20345:2011

INSOLE - *B-01* **SIZE** - *35-49*



Antistaticity



Puncture resistance



Impact and compression resistance up to 200 joules



Energy absorption at the heel



Hydrocarbon resistant outsole



Upper resistance to water penetration and absorption

PYTHON

S3

269U-003



S3 SRC

UPPER - *Leather* + three-dimensional fabric with honeycomb structure for maximum breathability

LINING - *Spyder-Net* three-dimensional fabric

SOLE - *Tyre Pu dual density SRC*

TOECAP - *Aluminium Alu200*

ANTI-PUNCTURE - *Txzero* textile insert

STANDARD - EN ISO 20345:2011

INSOLE - *B-01* **SIZE** - *35-49*



Antistaticity



Puncture resistance



Impact and compression resistance up to 200 joules



Energy absorption at the heel



Hydrocarbon resistant outsole



Upper resistance to water penetration and absorption

PEZZOL



INDIAN COBRA
269U-009 S1P SRC

QUATTRO

S3

245U-007



S3 ESD SRC

UPPER - PU Tek durable, breathable and water-repellent fabric + X-leather

LINING - Spyder-Net three-dimensional fabric

SOLE - Tyre Pu dual density SRC

TOECAP - Aluminium Alu200

ANTI-PUNCTURE - Txzero textile insert

STANDARD - EN ISO 20345:2011+ DGVU 112-191

INSOLE - T-01 **SIZE** - 35-48



Antistaticity



Puncture resistance



Impact and compression resistance up to 200 joules



Energy absorption at the heel



Hydrocarbon resistant outsole



Upper resistance to water penetration and absorption

NELSON

S1P

244U-008



S1P ESD SRC

UPPER - Velourtech suede + breathable fabric

LINING - Spyder-Net three-dimensional fabric

SOLE - Tyre Pu dual density SRC

TOECAP - Aluminium Alu200

ANTI-PUNCTURE - Txzero textile insert

STANDARD - EN ISO 20345:2011 + DGVU 112-191

INSOLE - T-01 **SIZE** - 35-49



Antistaticity



Puncture resistance



Impact and compression resistance up to 200 joules



Energy absorption at the heel



Hydrocarbon resistant outsole

CLARK

S1P

244U-007



S1P SRC

UPPER - Velourtech suede + breathable fabric

LINING - Spyder-Net three-dimensional fabric

SOLE - Tyre Pu dual density SRC

TOECAP - Aluminium Alu200

ANTI-PUNCTURE - Txzero textile insert

STANDARD - EN ISO 20345:2011 + DGVU 112-191

INSOLE - T-01 **SIZE** - 35-49



Antistaticity



Puncture resistance



Impact and compression resistance up to 200 joules



Energy absorption at the heel



Hydrocarbon resistant outsole

TARGA

S3

244U-021



S3 ESD SRC

UPPER - PU Tek durable, breathable and water-repellent fabric + X-leather

LINING - Spyder-Net three-dimensional fabric

SOLE - Tyre Pu dual density SRC

TOECAP - Aluminium Alu200

ANTI-PUNCTURE - Txzero textile insert

STANDARD - EN ISO 20345:2011+ DGUV 112-191

INSOLE - T-01 **SIZE** - 35-48



Antistaticity



Puncture resistance



Impact and compression resistance up to 200 joules



Energy absorption at the heel



Hydrocarbon resistant outsole



Upper resistance to water penetration and absorption

STEWART

S1P

244U-010



S1P SRC

UPPER - Velourtech suede + breathable fabric

LINING - Spyder-Net three-dimensional fabric

SOLE - Tyre Pu dual density SRC

TOECAP - Aluminium Alu200

ANTI-PUNCTURE - Txzero textile insert

STANDARD - EN ISO 20345:2011

INSOLE - T-01 **SIZE** - 35-48



Antistaticity



Puncture resistance



Impact and compression resistance up to 200 joules



Energy absorption at the heel



Hydrocarbon resistant outsole

NIKY

S1P

244U-011



S1P SRC

UPPER - Velourtech suede + breathable fabric

LINING - Spyder-Net three-dimensional fabric

SOLE - Tyre Pu dual density SRC

TOECAP - Aluminium Alu200

ANTI-PUNCTURE - Txzero textile insert

STANDARD - EN ISO 20345:2011 + DGUV 112-191

INSOLE - T-01 **SIZE** - 35-49



Antistaticity



Puncture resistance



Impact and compression resistance up to 200 joules



Energy absorption at the heel



Hydrocarbon resistant outsole

EMERSON

S3

248U-002



S3 SRC

UPPER - PU Tek durable, breathable and water-repellent fabric

LINING - Spyder-Net three-dimensional fabric

SOLE - Tyre Pu dual density SRC

TOECAP - Aluminium Alu200

ANTI-PUNCTURE - Txzero textile insert

STANDARD - EN ISO 20345:2011

INSOLE - T-01 **SIZE** - 35-48



Antistaticity



Puncture resistance



Impact and compression resistance up to 200 joules



Energy absorption at the heel



Hydrocarbon resistant outsole



Upper resistance to water penetration and absorption

FIREBIRD

S1P

245U-004



S1P SRC

UPPER - Velourtech suede + breathable fabric

LINING - Spyder-Net three-dimensional fabric

SOLE - Tyre Pu dual density SRC

TOECAP - Aluminium Alu200

ANTI-PUNCTURE - Txzero textile insert

STANDARD - EN ISO 20345:2011

INSOLE - T-01 **SIZE** - 35-48



Antistaticity



Puncture resistance



Impact and compression resistance up to 200 joules



Energy absorption at the heel



Hydrocarbon resistant outsole

MIURA

S1P

245U-003



S1P SRC

UPPER - Velourtech suede + breathable fabric

LINING - Spyder-Net three-dimensional fabric

SOLE - Tyre Pu dual density SRC

TOECAP - Aluminium Alu200

ANTI-PUNCTURE - Txzero textile insert

STANDARD - EN ISO 20345:2011

INSOLE - T-01 **SIZE** - 35-48



Antistaticity



Puncture resistance



Impact and compression resistance up to 200 joules



Energy absorption at the heel



Hydrocarbon resistant outsole

MUSTANG

S3

247U-002



S3 SRC

UPPER - PU Tek durable, breathable and water-repellent fabric

LINING - Spyder-Net three-dimensional fabric

SOLE - Tyre Pu dual density SRC

TOECAP - Aluminium Alu200

ANTI-PUNCTURE - Txzero textile insert

STANDARD - EN ISO 20345:2011+ DGVU 112-191

INSOLE - T-01 **SIZE** - 35-48



Antistaticity



Puncture resistance



Impact and compression resistance up to 200 joules



Energy absorption at the heel



Hydrocarbon resistant outsole

CAMARO

S1P

244U-004



S1P SRC

UPPER - Velourtech suede + breathable fabric

LINING - Spyder-Net three-dimensional fabric

SOLE - Tyre Pu dual density SRC

TOECAP - Aluminium Alu200

ANTI-PUNCTURE - Txzero textile insert

STANDARD - EN ISO 20345:2011

INSOLE - T-01 **SIZE** - 35-48



Antistaticity



Puncture resistance



Impact and compression resistance up to 200 joules



Energy absorption at the heel



Hydrocarbon resistant outsole

MACK

S1P

244U-003



S1P SRC

UPPER - Velourtech suede + breathable fabric

LINING - Spyder-Net three-dimensional fabric

SOLE - Tyre Pu dual density SRC

TOECAP - Aluminium Alu200

ANTI-PUNCTURE - Txzero textile insert

STANDARD - EN ISO 20345:2011

INSOLE - T-01 **SIZE** - 35-48



Antistaticity



Puncture resistance



Impact and compression resistance up to 200 joules



Energy absorption at the heel



Hydrocarbon resistant outsole

AVENTADOR

S3

245U-001



S3 SRC

UPPER - Supremoil water-repellent Nubuck leather

LINING - Spyder-Net three-dimensional fabric

SOLE - Tyre Pu dual density SRC

TOECAP - Aluminium Alu200

ANTI-PUNCTURE - Txzero textile insert

STANDARD - EN ISO 20345:2011

INSOLE - T-01 **SIZE** - 35-48



Antistaticity



Puncture resistance



Impact and compression resistance up to 200 joules



Energy absorption at the heel



Hydrocarbon resistant outsole



Upper resistance to water penetration and absorption

DIABLO

S3

245U-002



S3 SRC

UPPER - Supremoil water-repellent Nubuck leather

LINING - Spyder-Net three-dimensional fabric

SOLE - Tyre Pu dual density SRC

TOECAP - Aluminium Alu200

ANTI-PUNCTURE - Txzero textile insert

STANDARD - EN ISO 20345:2011

INSOLE - T-01 **SIZE** - 35-48



Antistaticity



Puncture resistance



Impact and compression resistance up to 200 joules



Energy absorption at the heel



Hydrocarbon resistant outsole



Upper resistance to water penetration and absorption

STELVIO

S1P

245U-005



S1P SRC

UPPER - Velourtech suede + breathable fabric

LINING - Spyder-Net three-dimensional fabric

SOLE - Tyre Pu dual density SRC

TOECAP - Aluminium Alu200

ANTI-PUNCTURE - Txzero textile insert

STANDARD - EN ISO 20345:2011

INSOLE - T-01 **SIZE** - 35-48



Antistaticity



Puncture resistance



Impact and compression resistance up to 200 joules



Energy absorption at the heel



Hydrocarbon resistant outsole

LEVANTE

S3

244U-001



S3 SRC

UPPER - Supremoil water-repellent Nubuck leather

LINING - Spyder-Net three-dimensional fabric

SOLE - Tyre Pu dual density SRC

TOECAP - Aluminium Alu200

ANTI-PUNCTURE - Txzero textile insert

STANDARD - EN ISO 20345:2011

INSOLE - T-01 **SIZE** - 35-48



Antistaticity



Puncture resistance



Impact and compression resistance up to 200 joules



Energy absorption at the heel



Hydrocarbon resistant outsole



Upper resistance to water penetration and absorption

DEVILLE

S3

244U-002



S3 SRC

UPPER - Supremoil water-repellent Nubuck leather

LINING - Spyder-Net three-dimensional fabric

SOLE - Tyre Pu dual density SRC

TOECAP - Aluminium Alu200

ANTI-PUNCTURE - Txzero textile insert

STANDARD - EN ISO 20345:2011

INSOLE - T-01 **SIZE** - 35-48



Antistaticity



Puncture resistance



Impact and compression resistance up to 200 joules



Energy absorption at the heel



Hydrocarbon resistant outsole



Upper resistance to water penetration and absorption

BRERA

S1P

244U-005



S1P SRC

UPPER - Velourtech suede + breathable fabric

LINING - Spyder-Net three-dimensional fabric

SOLE - Tyre Pu dual density SRC

TOECAP - Aluminium Alu200

ANTI-PUNCTURE - Txzero textile insert

STANDARD - EN ISO 20345:2011

INSOLE - T-01 **SIZE** - 35-48



Antistaticity



Puncture resistance



Impact and compression resistance up to 200 joules



Energy absorption at the heel



Hydrocarbon resistant outsole

GHIBLI

S3

246U-002



S3 SRC

UPPER - PU Tek durable, breathable and water-repellent fabric

LINING - Spyder-Net three-dimensional fabric

SOLE - Tyre Pu dual density SRC

TOECAP - Aluminium Alu200

ANTI-PUNCTURE - Txzero textile insert

STANDARD - EN ISO 20345:2011+ DGUV 112-191

INSOLE - T-01 **SIZE** - 35-48



Antistaticity



Puncture resistance



Impact and compression resistance up to 200 joules



Energy absorption at the heel



Hydrocarbon resistant outsole



Upper resistance to water penetration and absorption

JODY

S1P

244U-018



S1P SRC

UPPER - Velourtech suede

LINING - Spyder-Net three-dimensional fabric

SOLE - Tyre Pu dual density SRC

TOECAP - Aluminium Alu200

ANTI-PUNCTURE - Txzero textile insert

STANDARD - EN ISO 20345:2011

INSOLE - T-01 **SIZE** - 35-48



Antistaticity



Puncture resistance



Impact and compression resistance up to 200 joules



Energy absorption at the heel



Hydrocarbon resistant outsole

PEZZOL



MUSTANG
247U-002 S3 SRC



FRIDA

S3

247U-004



S3 SRC

UPPER - PU Tek durable, breathable and water-repellent fabric

LINING - Spyder-Net three-dimensional fabric

SOLE - Tyre Pu dual density SRC

TOECAP - Aluminium Alu200

ANTI-PUNCTURE - Txzero textile insert

STANDARD - EN ISO 20345:2011+ DGUV 112-191

INSOLE - T-01 **SIZE** - 35-42



Antistaticity



Puncture resistance



Impact and compression resistance up to 200 joules



Energy absorption at the heel



Hydrocarbon resistant outsole



Upper resistance to water penetration and absorption

EVITA

S3

247U-003



S3 SRC

UPPER - PU Tek durable, breathable and water-repellent fabric

LINING - Spyder-Net three-dimensional fabric

SOLE - Tyre Pu dual density SRC

TOECAP - Aluminium Alu200

ANTI-PUNCTURE - Txzero textile insert

STANDARD - EN ISO 20345:2011

INSOLE - T-01 **SIZE** - 35-42



Antistaticity



Puncture resistance



Impact and compression resistance up to 200 joules



Energy absorption at the heel



Hydrocarbon resistant outsole



Upper resistance to water penetration and absorption

RITA

S1P

244U-013



S1P SRC

UPPER - Velourtech suede + breathable fabric

LINING - Spyder-Net three-dimensional fabric

SOLE - Tyre Pu dual density SRC

TOECAP - Aluminium Alu200

ANTI-PUNCTURE - Txzero textile insert

STANDARD - EN ISO 20345:2011

INSOLE - T-01 **SIZE** - 35-42



Antistaticity



Puncture resistance



Impact and compression resistance up to 200 joules



Energy absorption at the heel



Hydrocarbon resistant outsole

PEZZOL



RITA

244U-013 S1P SRC

PEZZOL

X - WEAVE

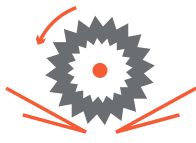


MANAUS

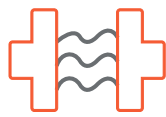
169UV-02
S3 WR HRO SRC



THE HIGH TENACITY SEAMLESS WORK SNEAKER



ABRASION
RESISTANT



TEAR
RESISTANT



FRESH AND
BREATHABLE



ULTRA
LIGHT



SAFE &
COMFORTABLE

There are many shoes on the market with abrasion resistant fabrics, but only the X-Weave technology allows to have a single piece upper, with several functional areas, for incredible performance: support on the side, protection on toe and heel, breathability on metatarsal area, uncompromising resistance.

How strong is the X-Weave fabric? This textile is 8 times more resistant to tearing than standard requirements and over 45kg are required to break it.

The abrasion resistance exceeds 500% of the Standard requirements.

It comes together with the typical Pezzol Industries sporty design.

KENYA

S3

169U-015



S3 SRC

UPPER - X-Weave high tenacity water-repellent nylon

LINING - Spyder-Net three-dimensional fabric

SOLE - Tyre Pu dual density SRC

TOECAP - Fiberglass PZ88

ANTI-PUNCTURE - Txzero textile insert

STANDARD - EN ISO 20345:2011 + DGVV 112 - 191

INSOLE - T-01 **SIZE** - 36-47



Antistaticity



Puncture resistance



Impact and compression resistance up to 200 joules



Energy absorption at the heel



Hydrocarbon resistant outsole



Upper resistance to water penetration and absorption

LUCOS

S1P

169U-007



S1P ESD SRC

UPPER - X-Weave high tenacity nylon

LINING - Spyder-Net three-dimensional fabric

SOLE - Tyre Pu dual density SRC

TOECAP - Fiberglass PZ88

ANTI-PUNCTURE - Txzero textile insert

STANDARD - EN ISO 20345:2011 + DGVV 112 - 191

INSOLE - T-01 **SIZE** - 36-47



Antistaticity



Puncture resistance



Impact and compression resistance up to 200 joules



Energy absorption at the heel



Hydrocarbon resistant outsole

CORDOBA

S1P

169U-006



S1P ESD SRC

UPPER - X-Weave high tenacity nylon

LINING - Spyder-Net three-dimensional fabric

SOLE - Tyre Pu dual density SRC

TOECAP - Fiberglass PZ88

ANTI-PUNCTURE - Txzero textile insert

STANDARD - EN ISO 20345:2011 + DGVV 112 - 191

INSOLE - T-01 **SIZE** - 36-47



Antistaticity



Puncture resistance



Impact and compression resistance up to 200 joules



Energy absorption at the heel



Hydrocarbon resistant outsole

MANAUS

S3

169UV-02



S3 WR HRO SRC

UPPER - X-Weave high tenacity water-repellent nylon

LINING - MEMBRANE GORE-TEX

SOLE - Tyre Pu-RUBBER VIBRAM® SRC HRO

TOECAP - FIBERGLASS PZ88

ANTI-PUNCTURE - Txzero textile insert

STANDARD - EN ISO 20345:2011

INSOLE - T-01 **SIZE** - 36-47



Antistaticity



Puncture resistance



Impact and compression resistance up to 200 joules



Energy absorption at the heel



Hydrocarbon resistant outsole



Upper resistance to water penetration and absorption



Heat Resistant Outsole



Resistant footwear To water

PEZZOL

TYRE FIBERGLASS



LEOPARD
979U-009
S3 ESD SRC

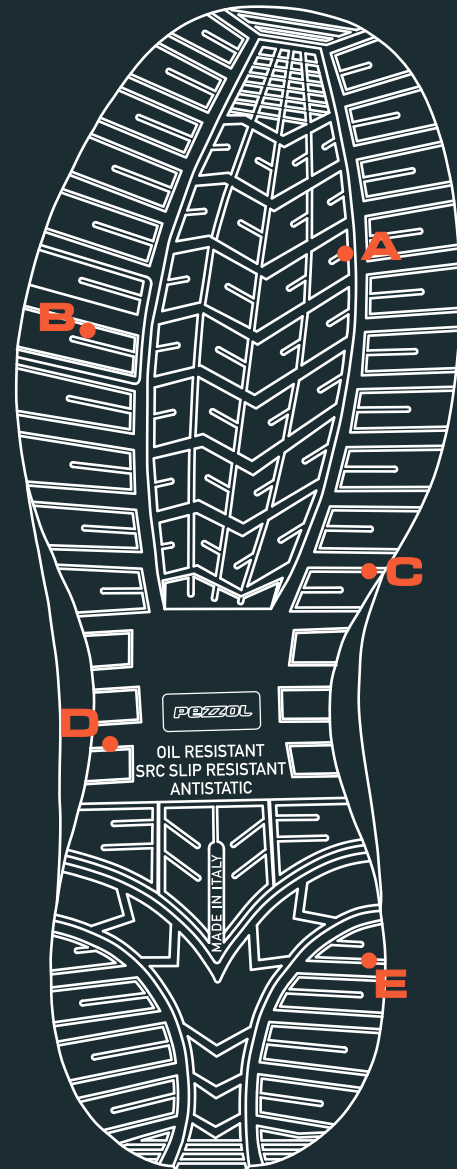
The **Tyre Fiberglass** line is designed for those who prefer a cool and dynamic look; these shoes are inspired by the sports world. This collection is up to 30% lighter than traditional safety shoes. Thanks to the use of ultra-light toe caps and a careful choice of materials, the Tyre Fiberglass is an extremely balanced, light and breathable shoe, that gives wide freedom of movement, flexibility and comfort.

Tyre Fiberglass is suitable for:

- Automotive
- Light industry
- Logistic and Transport
- Handicraft.

OUTSOLE TYRE PU/DUAL DENSITY

- A** Fuel oil resistant sole (FO)
- B** Excellent abrasion resistance
- C** Antistatic sole (A) according to EN ISO 20345:2011 standard
- D** Cleated sole profile for Excellent abrasion resistance maximum adherence to the ground
- E** Lightness and comfort thanks to Smart Injection technology



Slip resistance requirements - SRC

in compliance with the EN ISO 20345:2011 according to the method EN



LEOPARD

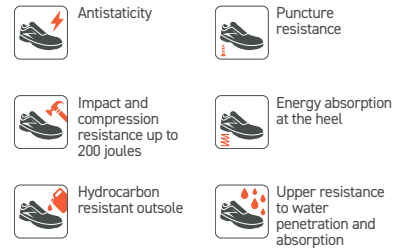
S3

979U-009



S3 ESD SRC

UPPER - Water resistant *Idrotech* leather + *X-Leather*
LINING - *Spyder-Net* three-dimensional fabric
SOLE - *Tyre Dual Density Pu SRC*
TOECAP - Fiberglass *PZ88*
ANTI-PUNCTURE - *Txzero* Textile insert
STANDARD - EN ISO 20345:2011 + DGVU 112-191
INSOLE - *T-01* **SIZE** - 36-47



SCRAMBLER

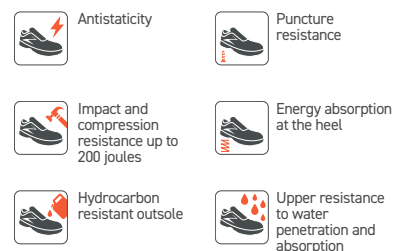
S3

979U-002



S3 SRC

UPPER - Water resistant *Idrotech* leather + *X-Leather*
LINING - *Spyder-Net* three-dimensional fabric
SOLE - *Tyre Dual Density SRC*
TOECAP - Fiberglass *PZ88*
ANTI-PUNCTURE - *Txzero* Textile insert
STANDARD - EN ISO 20345:2011
INSOLE - *T-01* **SIZE** - 35-47



MONTEZ

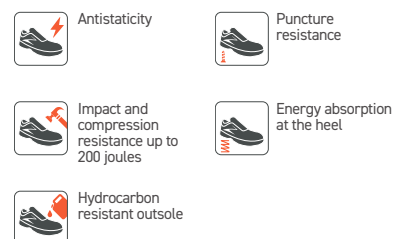
S1P

164U-003



S1P ESD SRC

UPPER - Mesh fabric + PU *Overwelding*
LINING - *Spyder-Net* three-dimensional fabric
SOLE - *Tyre Dual Density SRC*
TOECAP - Fiberglass *PZ88*
ANTI-PUNCTURE - *Txzero* Textile insert
STANDARD - EN ISO 20345:2011+ DGVU 112-191
INSOLE - *T-01* **SIZE** - 36-47



TORO

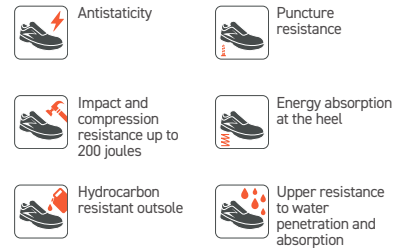
S3

978U-031



S3 ESD SRC

UPPER - Water resistant *Idrotech* leather + *X-Leather*
LINING - *Spyder-Net* three-dimensional fabric
SOLE - *Tyre Dual Density Pu SRC*
TOECAP - *Fiberglass PZ88*
ANTI-PUNCTURE - *Txzero* Textile insert
STANDARD - EN ISO 20345:2011 + DGUV 112-191
INSOLE - *T-01* **SIZE** - 36-47



ONYX

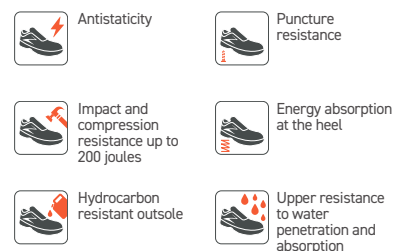
S3

978U-010



S3 SRC

UPPER - Water resistant *Idrotech* leather + *X-Leather*
LINING - *Spyder-Net* three-dimensional fabric
SOLE - *Tyre Dual Density SRC*
TOECAP - *Fiberglass PZ88*
ANTI-PUNCTURE - *Txzero* Textile insert
STANDARD - EN ISO 20345:2011
INSOLE - *T-01* **SIZE** - 35-47



MODUL ZERO

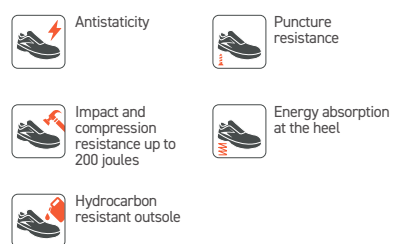
S1P

213U-001



S1P ESD SRC

UPPER - *TX-Micro* + *Velourtech* suede leather + *Boa*®
Fit System
LINING - *Spyder-Net* three-dimensional fabric
SOLE - *Tyre Pu dual density*
TOECAP - *Fiberglass PZ88*
ANTI-PUNCTURE - *Txzero* Textile insert
STANDARD - EN ISO 20345:2011+ DGUV 112-191
INSOLE - *T-01* **SIZE** - 36-47



YOTO

S1P

978U-009



S1P SRC

UPPER - Mesh fabric + Velourtech suede leather
LINING - Spyder-Net three-dimensional fabric
SUOLA - Tyre Dual Density SRC
TOECAP - Fiberglass PZ88
ANTI-PUNCTURE - Txzero Textile insert
STANDARD - EN ISO 20345:2011
INSOLE - T-01 **SIZE** - 35-47

SMART INJECTION TX ZERO FIBER GLASS METAL FREE



Antistaticity



Puncture resistance



Impact and compression resistance up to 200 joules



Energy absorption at the heel



Hydrocarbon resistant outsole

WEST

S1P

978U-008



S1P SRC

UPPER - Velourtech suede leather
LINING - Spyder-Net three-dimensional fabric
SOLE - Tyre Dual Density SRC
TOECAP - Fiberglass PZ88
ANTI-PUNCTURE - Txzero Textile insert
STANDARD - EN ISO 20345:2011
INSOLE - T-01 **SIZE** - 35-47

SMART INJECTION TX ZERO FIBER GLASS METAL FREE



Antistaticity



Puncture resistance



Impact and compression resistance up to 200 joules



Energy absorption at the heel



Hydrocarbon resistant outsole

FORMULA 3

S1P

821U-020



S1P ESD SRC

UPPER - Microtech microfiber
LINING - Spyder-Net three-dimensional fabric
SOLE - Tyre Dual Density SRC
TOECAP - Fiberglass PZ88
ANTIPERFORAZIONE - Txzero Textile insert
STANDARD - EN ISO 20345:2011 + DGUV 112-119
SOLE - T-01 **SIZE** - 36-47

SMART INJECTION TX ZERO FIBER GLASS METAL FREE ESD DGUV 112-119



Antistaticity



Puncture resistance



Impact and compression resistance up to 200 joules



Energy absorption at the heel



Hydrocarbon resistant outsole

PEZZOL



MONTEZ
164U-003 S1P ESD SRC

PEZZOL

TYRE HRO

FIBER GLASS

ADMIRAL

S3

141UV-01



UPPER - Water resistant *Supremoil* leather + SBX System

LINING - *Spyder-Net* three-dimensional fabric

SOLE - Tyre *Pu-Rubber Vibram® SRC HRO*

TOECAP - Fiberglass *PZ88*

ANTI-PUNCTURE - *Txzero* Textile insert

STANDARD - EN ISO 20345:2011

INSOLE - T-01 **SIZE** - 36-47



Antistaticity



Puncture resistance



Impact and compression resistance up to 200 joules



Energy absorption at the heel



Hydrocarbon resistant outsole



Upper resistance to water penetration and absorption

S3 ESD HRO SRC

VEGA

S3

142UV-02



UPPER - Water resistant *Supremoil* leather + SBX System

LINING - *Spyder-Net* three-dimensional fabric

SOLE - Tyre *Pu-Rubber Vibram® SRC HRO*

TOECAP - Fiberglass *PZ88*

ANTI-PUNCTURE - *Txzero* Textile insert

STANDARD - EN ISO 20345:2011

INSOLE - T-01 **SIZE** - 36-47



Antistaticity



Puncture resistance



Impact and compression resistance up to 200 joules



Energy absorption at the heel



Hydrocarbon resistant outsole



Upper resistance to water penetration and absorption

S3 ESD HRO SRC

OUTSOLE TYRE PU/RUBBER VIBRAM®

- A** Fuel oil resistant sole (FO)
- B** Excellent abrasion resistance
- C** Cleats for higher grip on Cleated sole profile for ladders
- D** Heat resistant Vibram® Rubber sole
- E** Cleated sole profile for ladders maximum adherence to the ground
- F** Antistatic sole (A) according to EN ISO 20345:2011 standard



Slip resistance requirements - SRC

in compliance with the EN ISO 20345:2011 according to the method EN



PEZZOL

TARGET SUB ZERO



RAMBLER FAST

129BV-06

S3 WR CI HI HRO SRC

This safety shoe line is designed for the most rigid climates and work conditions. The union of tradition and technology innovation guarantee maximum protection down to -30°C.

High-quality, full-grain leathers of European origins, offer high protection against chemical agents and guarantee water-resistance and insulation; yet, the use of heatinsulating materials makes sure that comfort is guaranteed at lowest temperatures.

The functional design of the soles, with increased cleats and special compound, provide maximum support, and stability in order to get the highest performance on icy surfaces.

The Vibram® Fire&Ice and Ice Grip soles are obtained with special rubber compound, to ensure extreme grip and resistance at lowest temperature and icy surfaces.

The line is designed with additional TPU protection elements in order to protect toe and heel from impacts, friction and liquids.

The indestructible and tear-resistant Boa® Fit System, with hydrophobic laces, completes and places this collection at the top of the range.

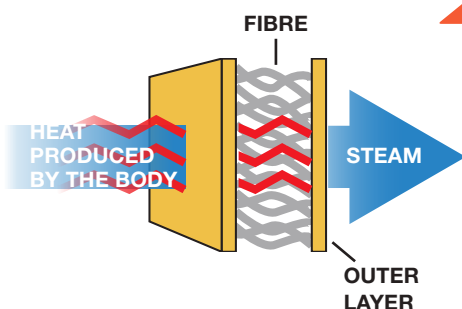
The **Target Sub-Zero** line meets both the European standard EN ISO 20345 and the Russian standard EAC TP TC 019/2011.



ICON PU-RUBBER VIBRAM® FIRE & ICE



Rubber designed to maintain good flex and comfort even at low temperatures. Treads with ICE GRIP technology.



THINSULATE®



An additional feature to enhance the thermal effect is the use of Thinsulate®: a light and soft material with great and certified thermal insulation capacity that keeps the limb warm even in extreme climatic conditions. Thanks to its synthetic fibres capable of incorporating air, it helps to prevent heat loss by maintaining a constant microclimate even below zero.

RAMBLER FAST

S3

129BV-06



S3 WR CI HI HRO SRC

UPPER - Water resistance Ultimate leather+ TPU protection insert

COLLAR-TONGUE - Calf leather

LINING - Membrane **GORE-TEX** + **Thinsulate**® B600

SOLE - Icon Pu-Rubber **Vibram**® Fire&Ice SRC HRO

TOECAP - Fiberglass **PZX**

ANTI-PUNCTURE - **Txzero** Textile insert

STANDARD - EN ISO 20345:2011

INSOLE - **I-01** **SIZE** - 38-48



VIKING

S3

127BV-04



S3 WR CI HI HRO SRC

UPPER - Water resistance Ultimate leather+ TPU protection insert

COLLAR-TONGUE - Calf leather

LINING - Membrane **GORE-TEX** + **Thinsulate**® B600

SOLE - Icon Pu-Rubber **Vibram**® Fire&Ice SRC HRO

TOECAP - Fiberglass **PZX**

ANTI-PUNCTURE - **Txzero** Textile insert

STANDARD - EN ISO 20345:2011

INSOLE - **I-01** **SIZE** - 38-48



CLAN

S3

185BV-05



S3 WR CI HI HRO SRC

UPPER - Water resistance Ultimate leather+ TPU protection insert

COLLAR-TONGUE - Calf leather

LINING - Membrane **GORE-TEX** + **Thinsulate**® B200

SOLE - Icon Pu-Rubber **Vibram**® Fire&Ice SRC HRO

TOECAP - Fiberglass **PZX**

ANTI-PUNCTURE - **Txzero** Textile insert

STANDARD - EN ISO 20345:2011

INSOLE - **I-01** **SIZE** - 38-48



PEZZOL



VIKING

127BV-04 S3 WR CI HI HRO SRC

PEZZOL

RAPTOR



ARCO
171BB-05
S1P ESD SRC



ALLIGATOR

172BV-02
S3 WR CI HI HRO SRC

RAPTOR HRO

ALLIGATOR

S3

172BV-02



S3 WR CI HI HRO SRC

UPPER - Water resistant TX-Micro + X-Leather + PU Overwelding

LINING - Membrane GORE-TEX

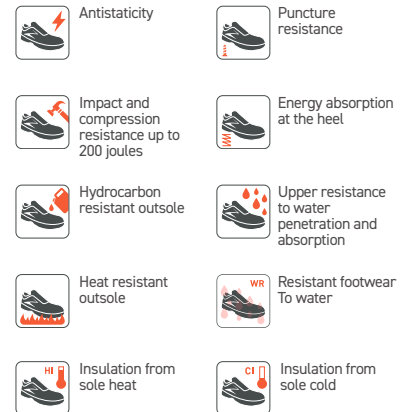
SOLE - Icon Pu-Gomma Vibram® SRC HRO

TOECAP - Fiberglass PZX

ANTI-PUNCTURE - Txzero Textile insert

STANDARD - EN ISO 20345:2011

INSOLE - T-01 **SIZE** - 38-48



CONDOR

S1P

172BB-05



S1P ESD SRC

UPPER - Mesh FABRIC + X-Leather + PU Overwelding

LINING - Spyder-Net three-dimensional fabric

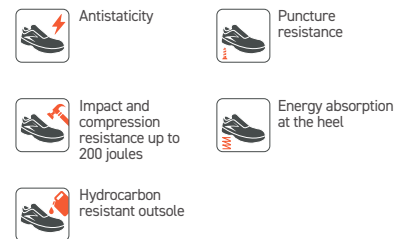
SOLE - Icon PU dual density SRC

TOECAP - Fiberglass PZX

ANTI-PUNCTURE - Txzero Textile insert

STANDARD - EN ISO 20345:2011

INSOLE - T-01 **SIZE** - 37-47



MORGAN

S3

172BB-01



S3 ESD SRC

UPPER - Water resistant TX-Micro + X-Leather + PU Overwelding

LINING - Spyder-Net three-dimensional fabric

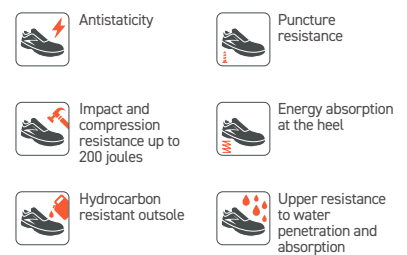
SOLE - Icon PU dual density SRC

TOECAP - Fiberglass PZX

ANTI-PUNCTURE - Txzero Textile insert

STANDARD - EN ISO 20345:2011

INSOLE - T-01 **SIZE** - 37-47



TIGER SNAKE

S3

171BV-02



S3 WR CI HI HRO SRC

UPPER - Water resistant TX-Micro + X-Leather + PU Overwelding

LINING - Membrane GORE-TEX

SOLE - Icon Pu-Gomma Vibram® SRC HRO

TOECAP - Fiberglass PZX

ANTI-PUNCTURE - Txzero Textile insert

STANDARD - EN ISO 20345:2011

INSOLE - T-01 **SIZE** - 38-48



Antistaticity



Puncture resistance



Impact and compression resistance up to 200 joules



Energy absorption at the heel



Hydrocarbon resistant outsole



Upper resistance to water penetration and absorption



Heat resistant outsole



Resistant footwear To water



Insulation from sole heat



Insulation from sole cold

ARCO

S1P

171BB-05



S1P ESD SRC

UPPER - Mesh FABRIC + X-Leather + PU Overwelding

LINING - Spyder-Net three-dimensional fabric

SOLE - Icon PU dual density SRC

TOECAP - Fibra di Vetro PZX

ANTI-PUNCTURE - Txzero Textile insert

STANDARD - EN ISO 20345:2011

INSOLE - T-01 **SIZE** - 37-47



Antistaticity



Puncture resistance



Impact and compression resistance up to 200 joules



Energy absorption at the heel



Hydrocarbon resistant outsole

CORDOVAN

S3

171BB-01



S3 ESD SRC

UPPER - Water resistant TX-Micro + X-Leather + PU Overwelding

LINING - Spyder-Net three-dimensional fabric

SOLE - Icon PU dual density SRC

TOECAP - Fiberglass PZX

ANTI-PUNCTURE - Txzero Textile insert

STANDARD - EN ISO 20345:2011

INSOLE - T-01 **SIZE** - 37-47



Antistaticity



Puncture resistance



Impact and compression resistance up to 200 joules



Energy absorption at the heel



Hydrocarbon resistant outsole



Upper resistance to water penetration and absorption

PEZZOL

ICON HRO FIBERGLASS



AZUL

203BV-04

S3 CI HI HRO SRC

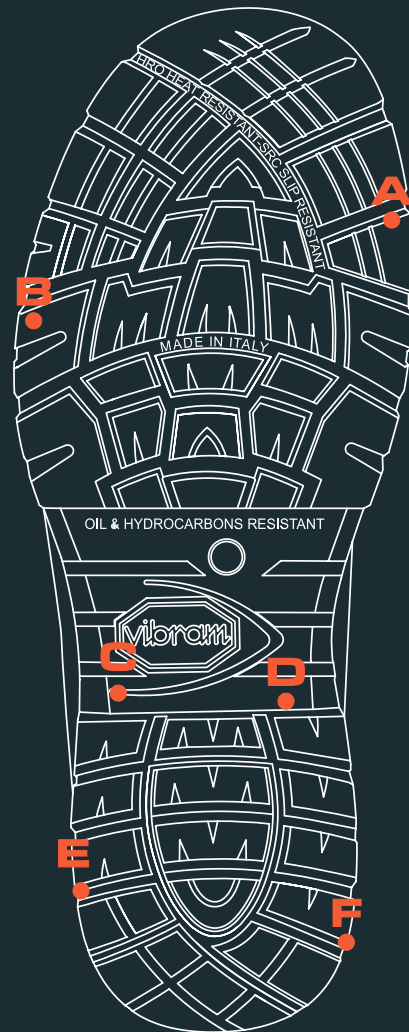
High-tech solutions with high-performance leathers for resistant and long-lasting safety shoes. High stability in critical environments thanks to the Vibram® sole, with anti-slip cleats in the waist area that offer grip on ladders. Ideal with the use of crampons and shock absorbing heel.

The **Icon Fiberglass** line is suitable for :

- Heavy industry
- Constructions
- Agriculture and zootechny
- Petrochemical industry

OUTSOLE ICON PU / RUBBER VIBRAM

- A** Fuel oil resistant sole (F0)
- B** Cleats for higher grip on ladders
- C** Heat resistant Vibram® Rubber sole
- D** Slip resistant sole suitable for the use on metal grating and wooden scaffold boards – SATRA Tests
- E** Antistatic sole (A) according to EN ISO 20345:2011 standard
- F** Designed for usage with crampons



Slip resistance requirements - SRC

in compliance with the EN ISO 20345:2011 according to the method EN 13287:2012



KING BULL

S3

290BV-01



UPPER - Water-repellent *Idrotech* leather + TPU + X-Leather

LINING - *Exotech* highly absorbent nylon

SOLE - *Icon Pu-Rubber Vibram® SRC HRO*

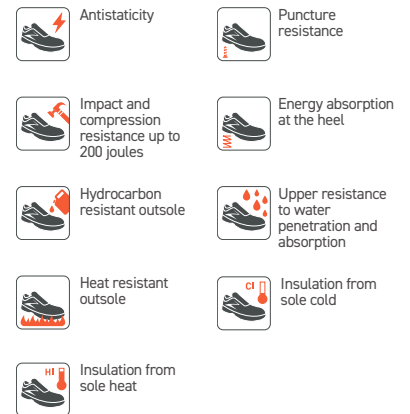
TOECAP - Fiberglass *PZX*

ANTI-PUNCTURE - *Txzero* Textile insert

STANDARD - EN ISO 20345:2011

INSOLE - T-01 **SIZE** - 38-48

S3 CI HI HRO ESD SRC



CANNIBAL

S3

222BV-03



UPPER - Water-repellent *Idrotech* leather + TPU

LINING - *Exotech* highly absorbent nylon

SOLE - *Icon Pu-Rubber Vibram® SRC HRO*

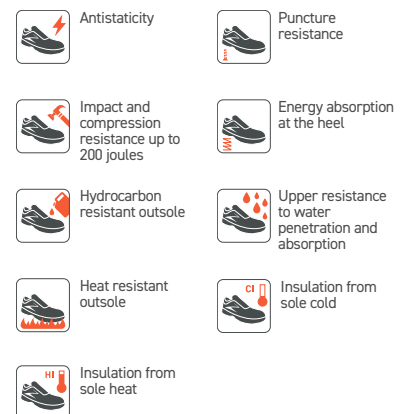
TOECAP - Fiberglass *PZX*

ANTI-PUNCTURE - *Txzero* Textile insert

STANDARD - EN ISO 20345:2011

INSOLE - T-01 **SIZE** - 38-48

S3 CI HI HRO ESD SRC



AZUL

S3

203BV-04



UPPER - Water-repellent *Idrotech* leather + *Boa® Fit System*

LINING - *Spyder-Net* three-dimensional fabric

SOLE - *Icon Pu Rubber Vibram® SRC HRO*

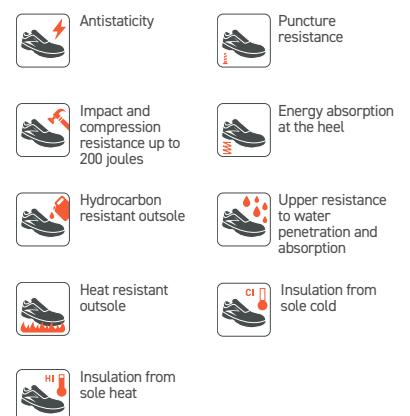
TOECAP - Fiberglass *PZX*

ANTI-PUNCTURE - *Txzero* Textile insert

STANDARD - EN ISO 20345:2011

INSOLE - T-01 **SIZE** - 38-48

S3 CI HI HRO SRC





FLORES

S3

279BV-01



S3 CI HI HRO SRC

UPPER - Water-repellent *Idrotech* leather + *Boa® Fit System*

LINING - *Spyder-Net* three-dimensional fabric

SOLE - *Icon Pu Rubber Vibram® SRC HRO*

TOECAP - *Fiberglass PZX*

ANTI-PUNCTURE - *Txzero* Textile insert

STANDARD - EN ISO 20345:2011

INSOLE - *T-01* **SIZE** - 38-48



Antistaticity



Puncture resistance



Impact and compression resistance up to 200 joules



Energy absorption at the heel



Hydrocarbon resistant outsole



Upper resistance to water penetration and absorption



Heat resistant outsole



Insulation from sole cold



Insulation from sole heat



CARLOS

S3

222BV-04



S3 CI HI HRO SRC

UPPER - Water-repellent *Idrotech* leather supremoil + TPU + X-Leather

LINING - *Exotech* highly absorbent nylon

SOLE - *Icon Pu-Rubber Vibram® SRC HRO*

TOECAP - *Fiberglass PZX*

ANTI-PUNCTURE - *Txzero* Textile insert

STANDARD - EN ISO 20345:2011

INSOLE - *T-01* **SIZE** - 38-48



Antistaticity



Puncture resistance



Impact and compression resistance up to 200 joules



Energy absorption at the heel



Hydrocarbon resistant outsole



Upper resistance to water penetration and absorption



Heat resistant outsole



Insulation from sole cold



Insulation from sole heat

PEZZOL

ICON FIBERGLASS



ELEKTRO

204BB-02
S3 CI SRC

The **Icon Fiberglass** line is characterized by high slip resistance and designed to offer every type of performance.

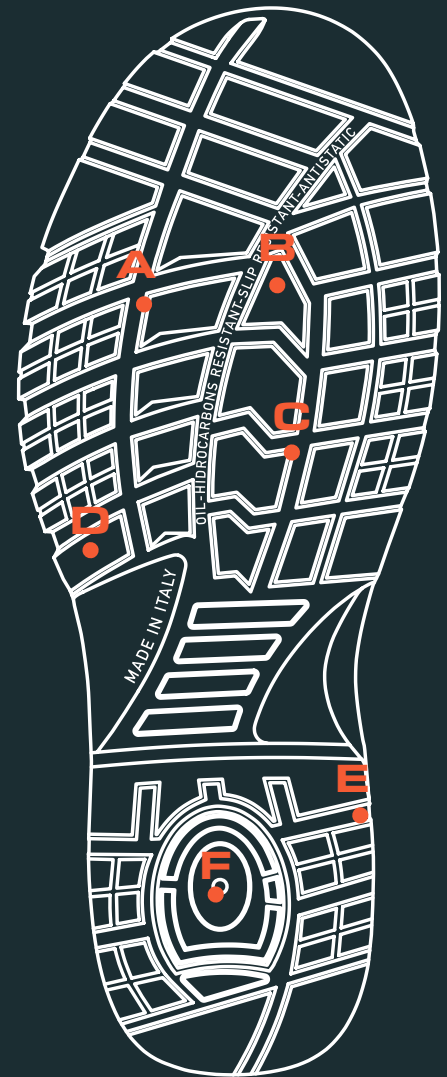
Excellent comfort and resistance. The slip-resistant cleats in the waist area improve grip on ladders. Exclusive sole profile to ensure high grip on the ground and shock absorption.

The **Icon Fiberglass** line is suitable for :

- Petrochemical industry
- Constructions
- Agriculture and zootechny
- Logistic and Transport.

OUTSOLE ICON PU/DUAL DENSITY

- A** Resistant to hydrocarbons (FO)
- B** Antistatic sole (A) according to EN ISO 20345:2011
- C** Non-slip sole suitable for use on metal grills and wooden grates - SATRA Tests
- D** Self-cleaning profile for maximum grip to the ground
- E** Wide fit for maximum stability and protection
- F** Cushioning heel



Slip resistance requirements - SRC

according to EN ISO 20345:2011 with method according to EN 13287:2012



norm values pezzol

HEIMDALL

S3

203BB-02



S3 WR SRC

UPPER - *Ultimate* water-repellent leather
COLLAR-TONGUE - Calf leather
LINING - MembranE **GORE-TEX**
SOLE - **ICON PU dual density SRC**
TOECAP - Fiberglass **PZX**
ANTI-PUNCTURE - **Txzero** Textile insert
STANDARD - EN ISO 20345:2011 + DGUV 112-191
INSOLE - **T-01** **SIZE** - 37-47



ELEKTRO

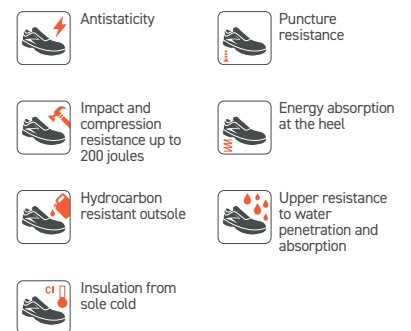
S3

204BB-02



S3 CI SRC

UPPER - Water-repellent **Idrotech** leather
LINING - **Thinsulate**® B200
SOLE - **Icon Pu dual density SRC**
TOECAP - Fiberglass **PZX**
ANTI-PUNCTURE - **Txzero** Textile insert
STANDARD - EN ISO 20345:2011+ DGUV 112-191
INSOLE - **T-01** **SIZE** - 37-50



THOR

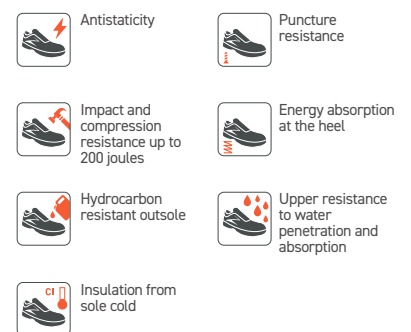
S3

204BB-01



S3 CI SRC

UPPER - Water-repellent **Idrotech** leather
LINING - **Thinsulate**® B200
SOLE - **Icon Pu dual density SRC**
TOECAP - **Fibra di Vetro PZX**
ANTI-PUNCTURE - **Txzero** Textile insert
STANDARD - EN ISO 20345:2011+ DGUV 112-191
INSOLE - **T-01** **SIZE** - 37-50



SIGFRID

S3

203BB-01



S3 SRC

UPPER - Water-repellent *Idrotech* leather
LINING - *Spyder-Net* three-dimensional fabric
SOLE - *Icon Pu* dual density SRC
TOECAP - Fiberglass PZX
ANTI-PUNCTURE - *Txzero* Textile insert
STANDARD - EN ISO 20345:2011 + DGUV 112-191
INSOLE - T-01 **SIZE** - 37-50

ESOLIGHT TX ZERO FIBER GLASS



Antistaticity



Puncture resistance



Impact and compression resistance up to 200 joules



Energy absorption at the heel



Hydrocarbon resistant outsole



Upper resistance to water penetration and absorption

CARTER

S3

203BB-03



S3 ESD SRC

TOMAIA - Water-repellent *Idrotech* leather + **BOA® FIT System**
LINING - *Spyder-Net* three-dimensional fabric
SOLE - *Icon Pu* dual density SRC
TOECAP - Fiberglass PZX
ANTI-PUNCTURE - *Txzero* Textile insert
STANDARD - EN ISO 20345:2011 + DGUV 112-119
INSOLE - T-01 **SIZE** - 37-47

ESOLIGHT TX ZERO FIBER GLASS



Antistaticity



Puncture resistance



Impact and compression resistance up to 200 joules



Energy absorption at the heel



Hydrocarbon resistant outsole



Upper resistance to water penetration and absorption

GEMINI

S3

279BB-01



S3 SRC

UPPER - Water-repellent *Idrotech* leather
LINING - *Spyder-Net* three-dimensional fabric
SOLE - *Icon Pu* dual density SRC
TOECAP - Fiberglass PZX
ANTI-PUNCTURE - *Txzero* Textile insert
STANDARD - EN ISO 20345:2011 + DGUV 112-119
INSOLE - T-01 **SIZE** - 37-50

ESOLIGHT TX ZERO FIBER GLASS



Antistaticity



Puncture resistance



Impact and compression resistance up to 200 joules



Energy absorption at the heel



Hydrocarbon resistant outsole



Upper resistance to water penetration and absorption

BOLIVAR

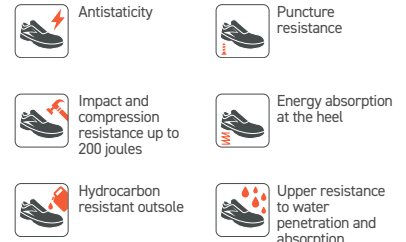
S3

131BB-06



S3 SRC

UPPER - Water-repellent *Idrotech* leather
LINING - UNLINED
SOLE - *Icon Pu* dual density SRC
TOECAP - *Fibra di Vetro PZX*
ANTI-PUNCTURE - *Txzero* Textile insert
STANDARD - EN ISO 20345:2011+ DGVU 112-191
INSOLE - T-01 **SIZE** - 37-47



MENDOZA

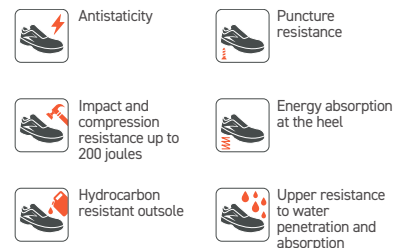
S3

131BB-05



S3 SRC

UPPER - Water-repellent *Idrotech* leather
LINING - UNLINED
SOLE - *Icon Pu* dual density SRC
TOECAP - *Fibra di Vetro PZX*
ANTI-PUNCTURE - *Txzero* Textile insert
STANDARD - EN ISO 20345:2011+ DGVU 112-191
INSOLE - T-01 **SIZE** - 37-47



BLACK ROCK

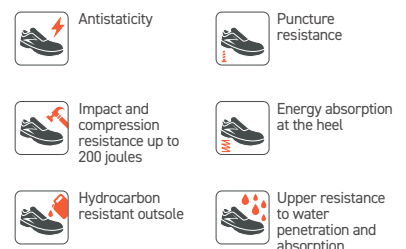
S3

222BB-01



S3 SRC

UPPER - Water-repellent *Idrotech* leather
LINING - *Exotech* highly absorbent nylon
SOLE - *Icon Pu* dual density SRC
TOECAP - *Fibra di Vetro PZX*
ANTI-PUNCTURE - *Txzero* Textile insert
STANDARD - EN ISO 20345:2011+ DGVU 112-191
INSOLE - T-01 **SIZE** - 37-47



PEZZOL

BLACK ROCK

222BB-01

S3 SRC



BAIKAL

S3

204BB-04



UPPER - Water-repellent *Idrotech* leather
LINING - *Spyder-Net* three-dimensional fabric
SOLE - *Icon Pu* dual density SRC
PUNTALE - *Fibra di Vetro PZX*
ANTI-PUNCTURE - *Txzero* Textile insert
STANDARD - EN ISO 20345:2011+ DGVU 112-191
INSOLE - T-01 **SIZE** - 37-47

ESOLIGHT TX ZERO FIBER GLASS



Antistaticity



Puncture resistance



Impact and compression resistance up to 200 joules



Energy absorption at the heel



Hydrocarbon resistant outsole



Upper resistance to water penetration and absorption

S3 SRC

DURANGO

S3

222BB-02



UPPER - Water-repellent *Idrotech* leather
LINING - *Spyder-Net* three-dimensional fabric
SOLE - *Icon Pu* dual density SRC
PUNTALE - *Fibra di Vetro PZX*
ANTI-PUNCTURE - *Txzero* Textile insert
STANDARD - EN ISO 20345:2011+ DGVU 112-191
INSOLE - T-01 **SIZE** - 37-47

ESOLIGHT TX ZERO FIBER GLASS



Antistaticity



Puncture resistance



Impact and compression resistance up to 200 joules



Energy absorption at the heel



Hydrocarbon resistant outsole



Upper resistance to water penetration and absorption

S3 SRC



BAIKAL
204BB-04
S3 SRC

PEZZOL

HYBRID SPECIAL



SONORA

916P-018

S3 HI HRO SRC

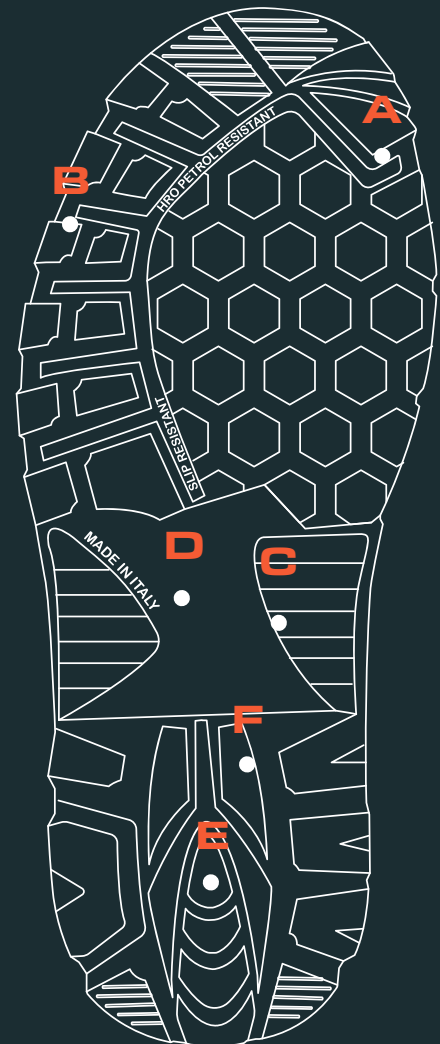
This line combines high-quality leathers and new technologies to create comfortable, resistant and longlasting products while offering maximum protection at work. Polyurethane midsole directly injected on upper and rubber outsole that ensures high slip-resistance to oils and hydrocarbons. Resisting to contact heat (HRO) up to 300°C.

The **Hybrid Special** line is suitable for :

- Heavy industry
- Petrochemical industry
- Constructions
- Agriculture and zootechny

OUTSOLE HYBRID/RUBBER

- A** Fuel oil resistant sole (FO)
- B** Self-cleaning sole profile to ensure maximum adherence to the ground
- C** Slip resistant sole suitable for the use on metal grating and wooden scaffold boards – SA-TRA Tests
- D** Antistatic sole (A) according to EN ISO 20345:2011 standard
- E** Shock absorbing heel
- F** Heat resistant rubber sole HRO



Slip resistance requirements - SRC

according to EN ISO 20345:2011 with method according to EN 13287:2012



COBRA

S3

916P-017



S3 HI HRO SRC

UPPER - Supremoil water-repellent leather + TPU+SBX System

LINING - Spyder-Net three-dimensional fabric

SOLE - Hybrid Pu-Rubber SRC HRO

TOECAP - Steel

ANTI-PUNCTURE - Txzero Textile insert

STANDARD - EN ISO 20345:2011

INSOLE - T-01 **SIZE** - 38-48



Antistaticity



Puncture resistance



Impact and compression resistance up to 200 joules



Energy absorption at the heel



Hydrocarbon resistant outsole



Upper resistance to water penetration and absorption



Heat resistant outsole



Heat insulation of the sole

SONORA

S3

916P-018



S3 HI HRO SRC

UPPER - Supremoil water-repellent leather + TPU+SBX System

LINING - Spyder-Net three-dimensional fabric

SOLE - Hybrid Pu-Rubber SRC HRO

TOECAP - Steel

ANTI-PUNCTURE - Txzero Textile insert

STANDARD - EN ISO 20345:2011

INSOLE - T-01 **SIZE** - 38-48



Antistaticity



Puncture resistance



Impact and compression resistance up to 200 joules



Energy absorption at the heel



Hydrocarbon resistant outsole



Upper resistance to water penetration and absorption



Heat resistant outsole



Heat insulation of the sole

COHIBA

SB

997P-007



SB P E WRU FO HI HRO SRC
ASTM EH PR

UPPER - Supremoil water-repellent leather

LINING - Highly abrasion-resistant polyester

SOLE - Hybrid Pu-Rubber SRC HRO

TOECAP - Polymeric Compo200

ANTI-PUNCTURE - Txzero Textile insert

STANDARD - EN ISO 20345:2011 + ASTM F2413-18

INSOLE - H-01 **SIZE** - 38-48



Impact and compression resistance up to 200 joules



Energy absorption at the heel



Hydrocarbon resistant outsole



Upper resistance to water penetration and absorption



Heat resistant outsole



Puncture resistance



Insulation from sole heat

NEXUS

S3

259P-001



S3 M HI HRO SRC

UPPER - Water-repellent **Idrotech** leather + Quick release + TPU metatarsal protection

LINING - **Spyder-Net** three-dimensional fabric

SOLE - **Hybrid Pu-Rubber SRC HRO**

TOECAP - Polymeric **Compo200**

ANTI-PUNCTURE - **Txzero** Textile insert

STANDARD - EN ISO 20345:2011

INSOLE - **H-01** **SIZE** - **38-48**



Antistaticity



Puncture resistance



Impact and compression resistance up to 200 joules



Energy absorption at the heel



Hydrocarbon resistant outsole



Upper resistance to water penetration and absorption



Heat resistant outsole



Heat insulation of the sole



Metatarsal protection

BELMONT

S3

258P-001



S3 HI HRO SRC

UPPER - Water-repellent **Idrotech** leather + Quick release

LINING - **Spyder-Net** three-dimensional fabric

SOLE - **Hybrid Pu-Rubber SRC HRO**

TOECAP - Polymeric **Compo200**

ANTI-PUNCTURE - **Txzero** Textile insert

STANDARD - EN ISO 20345:2011

INSOLE - **H-01** **SIZE** - **38-48**



Antistaticity



Puncture resistance



Impact and compression resistance up to 200 joules



Energy absorption at the heel



Hydrocarbon resistant outsole



Upper resistance to water penetration and absorption



Heat resistant outsole



Heat insulation of the sole

BOGOTÀ

SB

996P-003



SB P E WRU FO HI HRO SRC
ASTM EH PR

UPPER - **Supremoil** water-repellent leather

LINING - Highly abrasion-resistant polyester

SOLE - **Hybrid Pu-Rubber SRC HRO**

TOECAP - Polymeric **Compo200**

ANTI-PUNCTURE - **Txzero** Textile insert

STANDARD - EN ISO 20345:2011

insole - **H-01** **SIZE** - **38-48**



Impact and compression resistance up to 200 joules



Energy absorption at the heel



Hydrocarbon resistant outsole



Upper resistance to water penetration and absorption



Heat resistant outsole



Puncture resistance



Insulation from sole heat

RAGUSA FAST

S3

969P-010



S3 M HI HRO SRC

UPPER - Water-repellent *Idrotech* leather + TPU + Metatarsal protection *Poron XRD*®

LINING - Soft, velvet-effect polyester

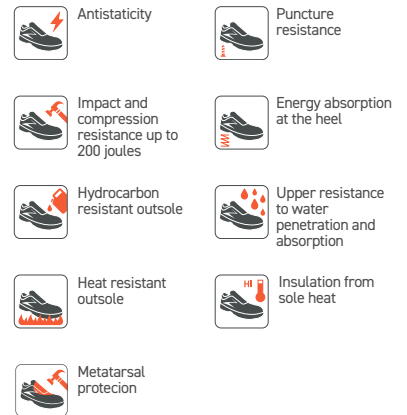
SOLE - Hybrid Pu-Rubber SRC HRO

TOECAP - STEEL

ANTI-PUNCTURE - *Txzero* Textile insert

STANDARD - EN ISO 20345:2011

INSOLE - T-01 **SIZE** - 38-48



AKULA

S3

921I-016



S3 CI HI HRO SRC

UPPER - Water-repellent *Idrotech* leather + BOA® + TPU

LINING - ISOLATING *Wintherm*® + Lamb's Wool

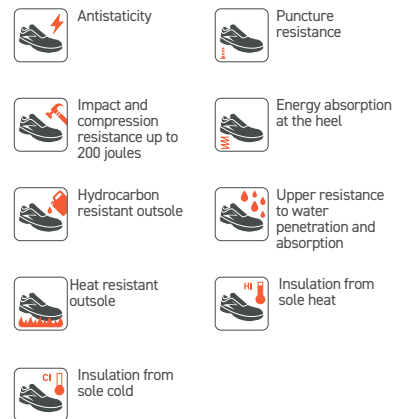
SOLE - Hybrid Pu-Rubber Ice Grip SRC HRO

TOECAP - Polymeric *Compo200*

ANTI-PUNCTURE - *Txzero* Textile insert

STANDARD - EN ISO 20345:2011

INSOLE - H-02 **SIZE** - 38-47



TYPHOON

S3

938I-011



S3 CI HI HRO SRC

UPPER - Water-repellent *Idrotech* leather + Elementi in TPU

FODERA - Isolante *Wintherm*® + Lana di Agnello

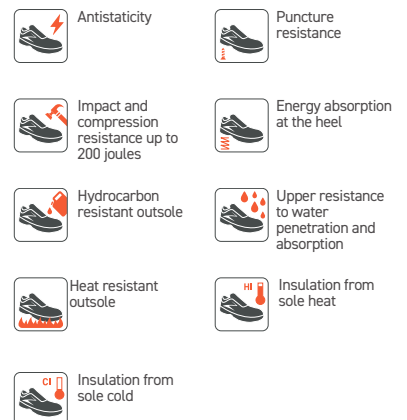
SUOLA - Hybrid Pu-Gomma Ice Grip SRC HRO

TOECAP - Polymeric *Compo200*

ANTI-PUNCTURE - *Txzero* Textile insert

STANDARD - EN ISO 20345:2011

INSOLE - H-02 **SIZE** - 38-47





RAGUSA FAST

969P-010
S3 M HI HRO SRC

PEZZOL

VINTAGE HRO COMPO



RIO
989M-012
S3 HRO SRC

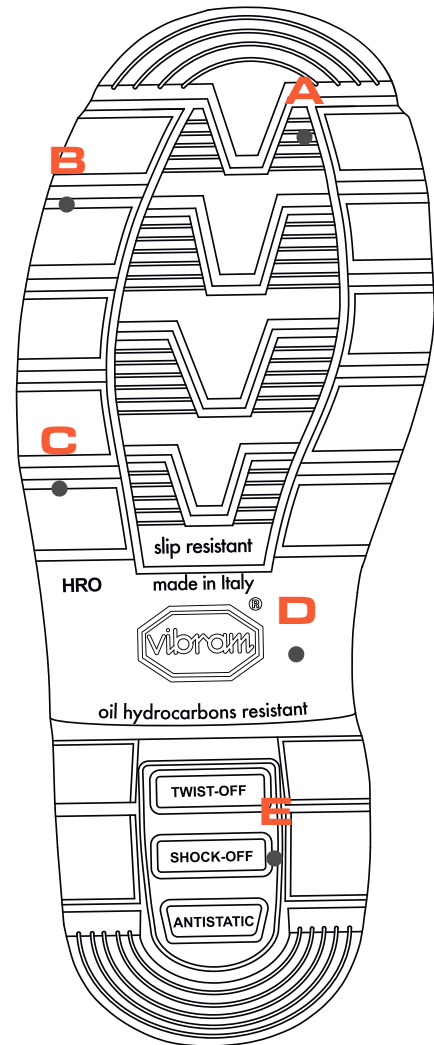
Strong and with a captivating look, these safety shoes are suitable in all weather conditions. Dual-density sole: Polyurethane midsole directly injected on upper and rubber outsole that ensures high slip-resistance to oils and hydrocarbons.

The **Vintage HRO Compo** line is suitable for:

- Heavy industry
- Petrochemical industry
- Constructions
- Agriculture and zootechny

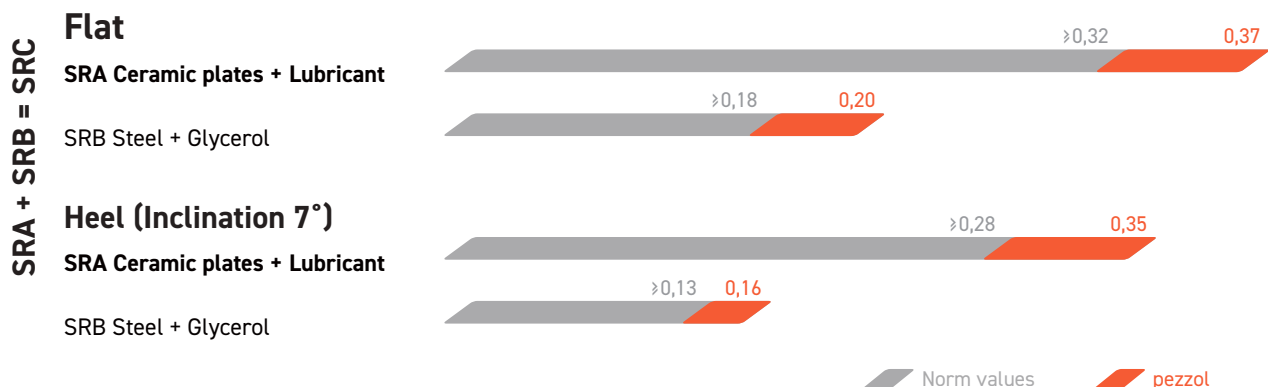
OUTSOLE VINTAGE PU/RUBBER VIBRAM®

- A** Resistant to hydrocarbons (FO)
- B** Self-cleaning, oversized weaves for maximum ground grip
- C** Antistatic sole (A) according to EN ISO 20345:2011 standard
- D** Heat resistant Vibram® Rubbersole
- E** Shock absorbing heel



Slip resistance requirements - SRC

according to EN ISO 20345:2011 with method according to EN 13287:2012



RANGER

S3

987M-013



S3 HRO SRC

UPPER - Water resistant Idrotech leather + TPU protection insert

LINING - Exotech high absorption nylon

SOLE - Vintage Pu-Rubber Vibram® SRC HRO

TOECAP - Polymeric Compo200

ANTI-PUNCTURE - Txzero Textile insert

STANDARD - EN ISO 20345:2011

INSOLE - V-01 **SIZE** - 38-46



Antistaticity



Puncture resistance



Impact and compression resistance up to 200 joules



Energy absorption at the heel



Hydrocarbon resistant outsole



Upper resistance to water penetration and absorption



Heat resistant outsole

RIO

S3

989M-012



S3 HRO SRC

UPPER - Water resistant Idrotech leather + TPU protection insert

LINING - Exotech high absorption nylon

SOLE - Vintage Pu-Rubber Vibram® SRC HRO

TOECAP - Polymeric Compo200

ANTI-PUNCTURE - Txzero Textile insert

STANDARD - EN ISO 20345:2011

INSOLE - V-01 **SIZE** - 38-46



Antistaticity



Puncture resistance



Impact and compression resistance up to 200 joules



Energy absorption at the heel



Hydrocarbon resistant outsole



Upper resistance to water penetration and absorption



Heat resistant outsole

NEVADA

S3

987M-014



S3 CI HRO SRC

UPPER - Water resistant Idrotech leather + TPU protection insert

LINING - Thinsulate® B400

SOLE - Vintage Pu-Rubber Vibram® SRC HRO

TOECAP - Polymeric Compo200

ANTI-PUNCTURE - Txzero Textile insert

STANDARD - EN ISO 20345:2011

INSOLE - V-01 **SIZE** - 38-46



Antistaticity



Puncture resistance



Impact and compression resistance up to 200 joules



Energy absorption at the heel



Hydrocarbon resistant outsole



Upper resistance to water penetration and absorption



Heat resistant outsole



Insulation from sole cold



RANGER

987M-013
S3 HRO SRC

PEZZOL

FOOD & CHEMICAL



POLLOCK
276S-001
S2 SRC

A LINE DEDICATED TO SECTORS WHERE A HIGH LEVEL OF HYGIENE AND PROTECTION IS ESSENTIAL



FRESH AND
BREATHABLE



ULTRA
LIGHT



SAFE &
COMFORTABLE

Lightweight, flexible and breathable, the shoes in the Food&Chemical line offer optimal comfort for several working hours while maintaining a constant microclimate for the feet.

All footwear is injected directly onto the upper: the Esolight 1.0 polyurethane midsole made up of low-density microcells increases energy absorption while the high-density Esolight 2.0 polyurethane tread guarantees greater durability and maximum slip resistance.

POLLOCK

S2

276S-001



S2 SRC

UPPER - Water-repellent synthetic material
LINING - Spyder-Net three-dimensional fabric
SOLE - Solid Pu Dual Density SRC
TOECAP - Polymeric Compo200
STANDARD - EN ISO 20345:2011
INSOLE - S-02 **SIZE** - 36-48

ESOLIGHT

COMPO 200

METAL FREE



Antistaticity



Energy absorption at the heel



Impact and compression resistance up to 200 joules



Upper resistance to water penetration and absorption



Hydrocarbon resistant outsole

HOPPER

S2

275S-001



S2 SRC

UPPER - Water-repellent synthetic material
LINING - Spydet-Ner three-dimensional fabric
SOLE - Solid Pu Dual Density SRC
TOECAP - Polymeric Compo200
STANDARD - EN ISO 20345:2011
INSOLE - S-02 **SIZE** - 36-48

ESOLIGHT

COMPO 200

METAL FREE



Antistaticity



Energy absorption at the heel



Impact and compression resistance up to 200 joules



Upper resistance to water penetration and absorption



Hydrocarbon resistant outsole

BASQUIAT

S2

275S-002



S2 SRC

UPPER - Water-repellent synthetic material
LINING - Spyder-Net three-dimensional fabric
SOLE - Solid Pu Dual Density SRC
TOECAP - Polymeric Compo200
STANDARD - EN ISO 20345:2011
INSOLE - S-02 **SIZE** - 36-48

ESOLIGHT

COMPO 200

METAL FREE



Antistaticity



Energy absorption at the heel



Impact and compression resistance up to 200 joules



Upper resistance to water penetration and absorption



Hydrocarbon resistant outsole



 **HOPPER**
275S-001
S2 SRC

PEZZOL

BASIC



WOLFGANG

981S-006

S3 ESD SRC

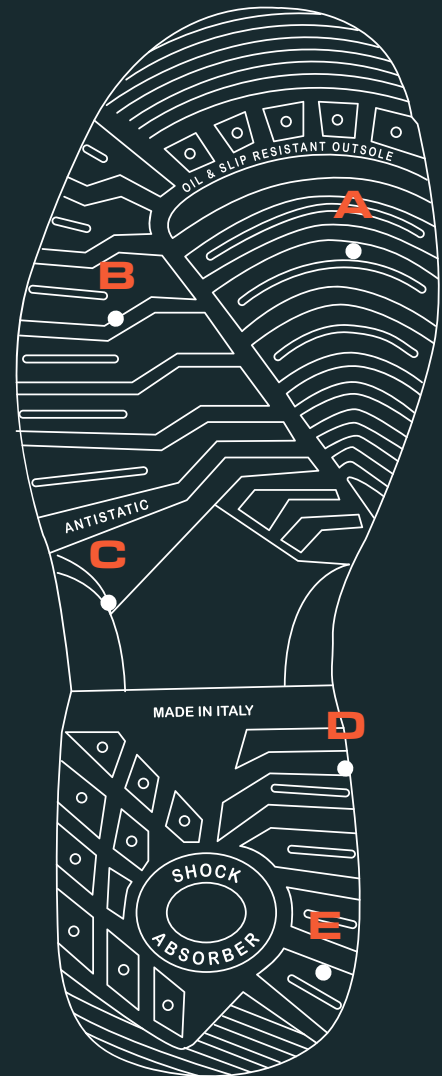
The **Basic** line is inspired by the world of sport. The use of high-performance materials, like breathable suede leather and double reinforced mesh ensures maximum flexibility. All the styles from this shoe-line are provided with light toe caps and high tenacity textile anti-puncture inlayers so that to guarantee resistance and durability.

The **Basic** line is suitable for :

- Constructions
- Light industry
- Logistic and Transport
- Handicraft.

OUTSOLE SOLID PU/DUAL DENSITY

- A** Fuel oil resistant sole (FO)
- B** Cleated sole profile for maximum adherence to the ground
- C** Antistatic sole (A) according to EN ISO 20345:2011 standard
- D** Excellent abrasion resistance with Esolight 2.0 polyurethane
- E** Shock absorbing heel



Slip resistance requirements - SRC

in compliance with the EN ISO 20345:2011 according to the method EN 13287:2012



norm value pezzol

WOLFGANG

S3

981S-006



NEW

TOMAIA - Water-repellent **Idrotech** leather + **X-Leather** protective element

LINING - **Spyder-Net** three-dimensional fabric

SOLE - **Solid Pu Dual Density SRC**

TOECAP - Polymeric **Compo200**

ANTI-PUNCTURE - **Txzero** Textile insert

STANDARD - EN ISO 20345:2011

SOLE - **T-01** **SIZE** - **36-48**

S3 ESD SRC

X-LEATHER



ESOLIGHT TXZERO



Antistaticity



Puncture resistance



Impact and compression resistance up to 200 joules



Energy absorption at the heel



Hydrocarbon resistant outsole



Upper resistance to water penetration and absorption

JACKSON

S3

981S-002



S3 SRC

UPPER - **Supremoil** water-repellent leather + quick release system

LINING - **Spyder-Net** three-dimensional fabric

SOLE - **Solid Pu Dual Density SRC**

TOECAP - Polymeric **Compo200**

ANTI-PUNCTURE - **Txzero** Textile insert

STANDARD - EN ISO 20345:2011

SOLE - **S-02** **SIZE** - **36-48**

ESOLIGHT TXZERO



Antistaticity



Puncture resistance



Impact and compression resistance up to 200 joules



Energy absorption at the heel



Hydrocarbon resistant outsole



Upper resistance to water penetration and absorption

CHALLENGE

S3

981S-003



S3 SRC

UPPER - **Supremoil** water-repellent leather + quick release system

LINING - **Spyder-Net** three-dimensional fabric

SOLE - **Solid Pu Dual Density SRC**

TOECAP - Polymeric **Compo200**

ANTI-PUNCTURE - **Txzero** Textile insert

STANDARD - EN ISO 20345:2011

SOLE - **S-02** **SIZE** - **36-48**

ESOLIGHT TXZERO



Antistaticity



Puncture resistance



Impact and compression resistance up to 200 joules



Energy absorption at the heel



Hydrocarbon resistant outsole



Upper resistance to water penetration and absorption

NICO

S3

980S-006



NEW

UPPER - Water-repellent **Idrotech** leather + **X-Leather** protective element

LINING - **Spyder-Net** three-dimensional fabric

SOLE - **Solid Pu Dual Density SRC**

TOECAP - Polymeric **Compo200**

ANTI-PUNCTURE - **Txzero** Textile insert

STANDARD - EN ISO 20345:2011

SOLE - **T-01** **SIZE** - **36-48**

X-LEATHER



ESOLIGHT TXZERO



Antistaticity



Puncture resistance



Impact and compression resistance up to 200 joules



Energy absorption at the heel



Hydrocarbon resistant outsole



Upper resistance to water penetration and absorption

S3 ESD SRC

SHELBY

S3

980S-002



UPPER - **Supremoil** water-repellent leather + quick release system

LINING - **Spyder-Net** three-dimensional fabric

SOLE - **Solid Pu Dual Density SRC**

TOECAP - Polymeric **Compo200**

ANTI-PUNCTURE - **Txzero** Textile insert

STANDARD - EN ISO 20345:2011

SOLE - **S-02** **SIZE** - **36-48**

ESOLIGHT TXZERO



Antistaticity



Puncture resistance



Impact and compression resistance up to 200 joules



Energy absorption at the heel



Hydrocarbon resistant outsole



Upper resistance to water penetration and absorption

S3 SRC

VOYAGER

S3

980S-003



UPPER - **Supremoil** water-repellent leather + quick release system

LINING - **Spyder-Net** three-dimensional fabric

SOLE - **Solid Pu Dual Density SRC**

TOECAP - Polymeric **Compo200**

ANTI-PUNCTURE - **Txzero** Textile insert

STANDARD - EN ISO 20345:2011

SOLE - **S-02** **SIZE** - **36-48**

ESOLIGHT TXZERO



Antistaticity



Puncture resistance



Impact and compression resistance up to 200 joules



Energy absorption at the heel



Hydrocarbon resistant outsole



Upper resistance to water penetration and absorption

S3 SRC

SCOTT

S3

981S-004



S3 SRC

UPPER - Velourtech suede leather + Quick-release system

LINING - Spidet-Net three-dimensional fabric

SOLE - Solid PU Dual Density SRC

TOECAP - Polymeric Compo200

ANTI-PUNCTURE - Txzero Textile insert

STANDARD - EN ISO 20345:2011

SOLE - S-02

SIZE - 36-48

ESOLIGHT TXZERO COMPO 200 METAL FREE



Antistaticity



Puncture resistance



Impact and compression resistance up to 200 joules



Energy absorption at the heel



Hydrocarbon resistant outsole



Upper resistance to water penetration and absorption

SILVER

S1P

980S-004



S1P SRC

UPPER - Velourtech suede leather

LINING - Spidet-Net three-dimensional fabric

SOLE - Solid PU Bidensità SRC

TOECAP - Polymeric Compo200

ANTI-PUNCTURE - Txzero Textile insert

STANDARD - EN ISO 20345:2011

SOLE - S-02

SIZE - 36-48

ESOLIGHT TXZERO COMPO 200 METAL FREE



Antistaticity



Puncture resistance



Impact and compression resistance up to 200 joules



Energy absorption at the heel



Hydrocarbon resistant outsole

MAX

S1P

980S-007



S1P SRC

UPPER - Velourtech suede leather + Quick-release system

LINING - Spidet-Net three-dimensional fabric

SOLE - Solid PU Dual Density SRC

TOECAP - Polymeric Compo200

ANTI-PUNCTURE - Txzero Textile insert

STANDARD - EN ISO 20345:2011

SOLE - S-02

SIZE - 36-48

ESOLIGHT TXZERO COMPO 200 METAL FREE



Antistaticity



Puncture resistance



Impact and compression resistance up to 200 joules



Energy absorption at the heel



Hydrocarbon resistant outsole

ASCARI

S1P

980S-005



S1P SRC

UPPER - Velourtech suede leather
LINING - Spidet-Net three-dimensional fabric
SOLE - Solid PU Bidensità SRC
TOECAP - Polymeric Compo200
ANTI-PUNCTURE - Txzero Textile insert
STANDARD - EN ISO 20345:2011
SOLE - S-02 **SIZE** - 36-48

ESOLIGHT TX ZERO COMPO 200 METAL FREE



Antistaticity



Puncture resistance



Impact and compression resistance up to 200 joules



Energy absorption at the heel



Hydrocarbon resistant outsole

AMON

S1P

281S-006



S1P SRC

UPPER - Velourtech suede leather + Tessuto mesh
LINING - Spidet-Net three-dimensional fabric
SOLE - Solid PU Dual Density SRC
TOECAP - Polymeric Compo200
ANTI-PUNCTURE - Txzero Textile insert
STANDARD - EN ISO 20345:2011
SOLE - S-02 **SIZE** - 36-48

ESOLIGHT TX ZERO COMPO 200 METAL FREE



Antistaticity



Puncture resistance



Impact and compression resistance up to 200 joules



Energy absorption at the heel



Hydrocarbon resistant outsole

MONZA

S3

293S-001



S3 ESD SRC

UPPER - Water-repellent **Idrotech** leather + X-Leather

LINING - **Spidet-Net** three-dimensional fabric

SOLE - **Solid PU Dual Desnity SRC**

TOECAP - Polymeric **Compo200**

ANTI-PUNCTURE - **Txzero** Textile insert

STANDARD - EN ISO 20345:2011

SOLE - T-01 **SIZE** - 36-48



Antistaticity



Puncture resistance



Impact and compression resistance up to 200 joules



Energy absorption at the heel



Hydrocarbon resistant outsole



Upper resistance to water penetration and absorption

MODENA

S3

292S-001



S3 ESD SRC

UPPER - Water-repellent **Idrotech** leather + X-Leather

LINING - **Spidet-Net** three-dimensional fabric

SOLE - **Solid PU Dual Desnity SRC**

TOECAP - Polymeric **Compo200**

ANTI-PUNCTURE - **Txzero** Textile insert

STANDARD - EN ISO 20345:2011

SOLE - T-01 **SIZE** - 36-48



Antistaticity



Puncture resistance



Impact and compression resistance up to 200 joules



Energy absorption at the heel



Hydrocarbon resistant outsole



Upper resistance to water penetration and absorption

MALBEK

S1P

610Z-023



S1P SRC

UPPER - **Velourtech** suede leather

LINING - **Spidet-Net** three-dimensional fabric

SOLE - **Solid PU Dual Desnity SRC**

TOECAP - Steel

ANTI-PUNCTURE - **Inox** Steel insert

STANDARD - EN ISO 20345:2011

SOLE - S-01 **SIZE** - 36-47



Antistaticity



Puncture resistance



Impact and compression resistance up to 200 joules



Energy absorption at the heel



Hydrocarbon resistant outsole

MISTRAL

S3

619Z-016



S3 SRC

UPPER - Water-repellent **Idrotech** leather + Quick Release

LINING - **Spidet-Net** three-dimensional fabric

SOLE - Solid PU Dual Desnity SRC

TOECAP - Steel

ANTI-PUNCTURE - **Inox** Steel insertt

STANDARD - EN ISO 20345:2011

SOLE - S-01 **SIZE** - 36-48

ESOLIGHT 10+12 STEEL



Antistaticity



Puncture resistance



Impact and compression resistance up to 200 joules



Energy absorption at the heel



Hydrocarbon resistant outsole



Upper resistance to water penetration and absorption

FINK

S3

619Z-017



S3 SRC

UPPER - Water-repellent **Idrotech** leather

LINING - **Spidet-Net** three-dimensional fabric

SOLE - Solid PU Dual Desnity SRC

TOECAP - Steel

ANTI-PUNCTURE - **Inox** Steel insertt

STANDARD - EN ISO 20345:2011

SOLE - S-01 **SIZE** - 36-47

ESOLIGHT 10+12 STEEL



Antistaticity



Puncture resistance



Impact and compression resistance up to 200 joules



Energy absorption at the heel



Hydrocarbon resistant outsole



Upper resistance to water penetration and absorption

OYSTER

S3

610Z-022



S3 SRC

UPPER - Water-repellent **Idrotech** leather

LINING - **Spidet-Net** three-dimensional fabric

SOLE - Solid PU Dual Desnity SRC

TOECAP - Steel

ANTI-PUNCTURE - **Inox** Steel insertt

STANDARD - EN ISO 20345:2011

SOLE - S-01 **SIZE** - 36-47

ESOLIGHT 10+12 STEEL



Antistaticity



Puncture resistance



Impact and compression resistance up to 200 joules



Energy absorption at the heel



Hydrocarbon resistant outsole



Upper resistance to water penetration and absorption

PEZZOL

RESCUE

RESCUING IN ALL SAFETY



LOTHAR

692Z-014

S3 SRC

LOTHAR

S3

692Z-014



S3 SRC

UPPER - Water-repellent **Velourtech** suede + high visibility water-repellent fabric

LINING - **Spidet-Net** three-dimensional fabric

SOLE - **Solid Pu Dual Density SRC**

TOECAP - **Steel**

ANTI-PUNCTURE - **Txzero** Textile insert

STANDARD - EN ISO 20345:2011

TAGLIE - 36-47



Antistaticity



Puncture resistance



Impact and compression resistance up to 200 joules



Energy absorption at the heel



Hydrocarbon resistant outsole



Upper resistance to water penetration and absorption

DIAZ

S3

128D-001



S3 WR HI HRO SRA

UPPER - Water-repellent **Velourtech** suede + high visibility water-repellent fabric

LINING - **Spidet-Net** three-dimensional fabric

SOLE - **Kynox Pu-Rubber HRO SRA**

TOECAP - **Steel**

ANTI-PUNCTURE - **Txzero** Textile insert

STANDARD - EN ISO 20345:2011

SIZE - 36-48



Antistaticity



Puncture resistance



Impact and compression resistance up to 200 joules



Energy absorption at the heel



Hydrocarbon resistant outsole



Upper resistance to water penetration and absorption



Contact heat resistance of the sole



Resistant footwear To water



Insulation from sole heat



ELECTROSTATIC DISCHARGE

PEZZOL

ESD SELECTION



KING BULL
290BV-01

Pg 66



CANNIBAL
222BV-03

Pg 66



MORGAN
172BB-01

Pg 62



CORDOVAN
171BB-01

Pg 63



CONDOR
172BB-05

Pg 62



ARCO
171BB-05

Pg 63



BLACK MAMBAS
269U-005

Pg 32



ADMIRAL
141UV-01

Pg 54



QUATTRO
245U-007

Pg 34



TARGA
244U-021

Pg 35



NICO
980S-006

Pg 93



NELSON
244U-008

Pg 34



SUMATRA
269U-007

Pg 28



VEGA
142UV-02

Pg 54



TONGASS
248U-003

Pg 28



GOBLIN
247U-007

Pg 28



MONZA
293S-001

Pg 96



MODENA
292S-001

Pg 96



LEOPARD
979U-009

Pg 50



TORO
978U-031

Pg 51



WOLFGANG
981S-006

Pg 92



LUCOS
169U-007

Pg 46



CORDOBA
169U-006

Pg 46



MONTEZ
164U-003

Pg 50



MODUL-ZERO
213U-001

Pg 51



FORMULA 3
821U-020

Pg 52



CARTER
203BB-03

Pg 71



OIL & GAS HEROES

PEZZOL

OIL & GAS HEROES



RAMBLER FAST
129BV-06
Pg 58



VIKING
127BV-04
Pg 58



CLAN
185BV-05
Pg 58



KING BULL
290BV-01
Pg 66



AZUL
203BV-04
Pg 66



FLORES
279BV-01
Pg 67



CANNIBAL
222BV-03
Pg 66



HEIMDALL
203BB-02
Pg 70



ELEKTRO
204BB-02
Pg 70



THOR
204BB-01
Pg 70



SIGFRID
203BB-01
Pg 71



CARTER
203BB-03
Pg 71



CARLOS
222BV-04
Pg 67



BOGOTÁ
996P-003
Pg 79



BOLIVAR
131BB-06
Pg 72



MENDOZA
131BB-05
Pg 72



NEVADA
987M-014
Pg 84



RANGER
987M-013
Pg 84



RIO
989M-012
Pg 84



BLACK ROCK
222BB-01
Pg 72



MANAUS
169UV-02
Pg 47



RAGUSA FAST
969P-010
Pg 80



COBRA
916P-017
Pg 78



SONORA
916P-018
Pg 78



AKULA
921I-016
Pg 80



TYPHOON
938I-011
Pg 80



COHIBA
997P-007
Pg 78



ALLIGATOR
172BV-02
Pg 62



TIGER SNAKE
171BV-02
Pg 63

	 BUILDING CARPENTRY	 HEAVY INDUSTRY	 LIGHT INDUSTRY	 LOGISTIC TRANSPORT	 OIL & GAS	 AUTOMOTIVE HI-TECH	 AIRPORT SYSTEM	 HANDICRAFT	 AGRICULTURE ZOOTECHNY	 FOOD SECTOR CHEMICAL HEALTH	 SPECIAL
 ADMIRAL 141UV-01 S3 ESD HRO SRC Pg 54			●	●	●		●				
 AKULA 921I-016 S3 CI HI HRO SRC Pg 80		●			●				●		
 ALLIGATOR 172BV-02 S3 WR CI HI HRO SRC Pg 62				●	●		●				
 AMON 281S-006 S1P SRC Pg 95	●		●	●			●	●			
 ARCO 171BB-05 S1P ESD SRC Pg 63	●		●	●		●		●			
 ASCARI 980S-005 S1P SRC Pg 95	●		●	●			●	●	●		
 AVENTADOR 245U-001 S3 SRC Pg 38	●		●	●		●		●			
 AZUL 203BV-04 S3 CI HI HRO SRC Pg 66	●	●			●		●		●		
 BAIKAL 204BB-04 S3 SRC Pg 74	●				●				●		
 BASQUIAT 275S-002 S2 SRC Pg 88										●	
 BELMONT 258P-001 S3 HI HRO SRC Pg 79		●									●
 BLACK MAMBAS 269U-005 S3 ESD SRC Pg 32	●		●	●		●		●			
 BLACK ROCK 222BB-01 S3 SRC Pg 72	●			●	●				●		

											
	BUILDING CARPENTRY	HEAVY INDUSTRY	LIGHT INDUSTRY	LOGISTIC TRANSPORT	OIL&GAS	AUTOMOTIVE HI-TECH	AIRPORT SYSTEM	HANDICRAFT	AGRICULTURE ZOOTECHNY	FOOD SECTOR CHEMICAL HEALTH	SPECIAL
 BOGOTÁ 996P-003 F2413-18 M/I/75 C/75 EH PR SB P E WRU FO HI HRO SRC Pg 79		●			●		●				●
 BOLIVAR 131BB-06 S3 SRC Pg 72					●				●		
 BRERA 244U-005 S1P SRC Pg 39	●		●	●		●		●	●		
 CAMARO 244U-004 S1P SRC Pg 37	●		●	●		●		●	●		
 CANNIBAL 222BV-03 S3 CI HI HRO ESD SRC Pg 66	●		●	●		●		●			
 CARLOS 222BV-04 S3 CI HI HRO SRC Pg 67	●	●			●		●		●		
 CARTER 203BB-03 S3 ESD SRC Pg 71	●			●	●				●		
 CHALLENGE 981S-003 S3 SRC PG 92	●			●			●	●			
 CLAN 185BV-05 S3 WR CI HI HRO SRC Pg 58		●			●				●		
 CLARK 244U-007 S1P SRC Pg 34	●		●	●		●		●			
 COBRA 916P-017 S3 HI HRO SRC Pg 78	●	●			●				●		
 COHIBA 997P-007 F2413-18 M/I/75 C/75 EH PR SB P E WRU FO HI HRO SRC Pg 78		●			●		●				●
 CONDOR 172BB-05 S1P ESD SRC Pg 62	●		●	●		●		●			

	 BUILDING CARPENTRY	 HEAVY INDUSTRY	 LIGHT INDUSTRY	 LOGISTIC TRANSPORT	 OIL&GAS	 AUTOMOTIVE HI-TECH	 AIRPORT SYSTEM	 HANDICRAFT	 AGRICULTURE ZOOTECHNY	 FOOD SECTOR CHEMICAL HEALTH	 SPECIAL
 CORDOBA 169U-006 S1P ESD SRC Pg 46			•	•		•	•	•			
 CORDOVAN 171BB-01 S3 ESD SRC Pg 63	•		•	•		•		•			
 DEVILLE 244U-002 S3 SRC Pg 39	•		•	•		•		•	•		
 DIABLO 245U-002 S3 SRC Pg 38	•		•	•		•		•			
 DIAZ 128D-001 S3 WR HI HRO SRA Pg 99											•
 ELEKTRO 204BB-02 S3 CI SRC Pg 70					•				•		
 EMERSON 248U-002 S3 SRC Pg 36	•		•	•				•	•		
 EVITA 247U-003 S3 SRC Pg 42	•		•	•		•		•	•		
 FINK 619Z-017 S3 SRC Pg 97	•	•									
 FIREBIRD 245U-004 S1P SRC Pg 36	•		•	•		•		•			
 FLORES 279BV-01 S3 CI HI HRO SRC Pg 67	•	•		•	•						
 FORMULA 3 821U-020 S1P ESD SRC Pg 52			•	•		•	•	•			
 FRIDA 247U-004 S3 SRC Pg 42	•		•	•		•		•	•		

	 BUILDING CARPENTRY	 HEAVY INDUSTRY	 LIGHT INDUSTRY	 LOGISTIC TRANSPORT	 OIL&GAS	 AUTOMOTIVE HI-TECH	 AIRPORT SYSTEM	 HANDICRAFT	 AGRICULTURE ZOOTECHNY	 FOOD SECTOR CHEMICAL HEALTH	 SPECIAL
 GEMINI 279BB-01 S3 ESD SRC Pg 71	•		•	•				•			
 GHIBLI 246U-002 S3 SRC Pg 40	•		•	•		•		•			
 GOBLIN 247U-007 S3 ESD SRC Pg 28	•		•	•		•	•	•			
 HEIMDALL 203BB-03 S3 CI SRC Pg 70	•			•	•				•		
 HOPPER 275S-001 S2 SRC Pg 88										•	
 INDIAN COBRA 269U-009 SIP SRC Pg 32	•		•	•		•		•			
 JACKSON 981S-002 S3 SRC Pg 92	•			•			•	•			
 JODY 244U-018 S1P SRC Pg 40	•		•	•		•		•	•		
 KENYA 169U-015 S3 SRC Pg 46	•		•	•				•			
 KING BULL 290BV-01 S3 CI HI HRO ESD SRC Pg 66		•			•				•		
 LEOPARD 979U-009 S3 ESD SRC Pg 50	•		•	•		•	•	•	•		
 LEVANTE 244U-001 S3 SRC Pg 39	•		•	•		•		•	•		
 LOTHAR 692Z-014 S3 SRC Pg 99											•

											
	BUILDING CARPENTRY	HEAVY INDUSTRY	LIGHT INDUSTRY	LOGISTIC TRANSPORT	OIL&GAS	AUTOMOTIVE HI-TECH	AIRPORT SYSTEM	HANDICRAFT	AGRICULTURE ZOOTECHNY	FOOD SECTOR CHEMICAL HEALTH	SPECIAL
 LUCOS 169U-007 S1P ESD SRC Pg 46			•	•		•	•	•			
 MACK 244U-003 S1P SRC Pg 37	•		•	•		•		•			
 MALBEK 610Z-023 S1P SRC Pg 96	•		•	•					•		
 MANAUS 169UV-02 S3 WR HRO SRC Pg 47			•	•			•				
 MAX 980S-007 S1P SRC Pg 94	•		•	•		•		•		•	
 MENDOZA 131BB-05 S3 SRC Pg 72					•					•	
 MISTRAL 619Z-016 S3 SRC Pg 97	•			•			•	•			
 MIURA 245U-003 S1P SRC Pg 36	•		•	•		•		•			
 MODENA 292S-001 S3 ESD SRC Pg 96	•		•	•		•	•			•	
 MODUL ZERO 213U-001 S1P ESD SRC Pg 51			•	•		•	•	•			
 MONTEZ 164U-003 S1P ESD SRC Pg 50			•	•		•	•	•			
 MONZA 293S-001 S3 ESD SRC Pg 96	•		•	•		•	•			•	
 MORGAN 172BB-01 S3 ESD SRC Pg 62	•		•	•		•		•			

											
	BUILDING CARPENTRY	HEAVY INDUSTRY	LIGHT INDUSTRY	LOGISTIC TRANSPORT	OIL&GAS	AUTOMOTIVE HI-TECH	AIRPORT SYSTEM	HANDICRAFT	AGRICULTURE ZOOTECHNY	FOOD SECTOR CHEMICAL HEALTH	SPECIAL
 MUSTANG 247U-002 S3 SRC Pg 37	•		•	•		•		•			
 NELSON 244U-008 S1P ESD SRC Pg 34	•		•	•		•		•			
 NEVADA 987M-014 S3 CI HRO SRC Pg 84		•			•				•		
 NEXUS 259P-001 S3 M HI HRO SRC Pg 79		•									•
 NICO 980S-006 S3 ESD SRC Pg 93	•		•	•		•		•	•		
 NIKY 244U-011 S1P SRC Pg 35	•		•	•		•		•			
 ONYX 978U-010 S3 SRC Pg 51	•		•	•		•	•	•	•		
 OYSTER 610Z-022 S3 SRC Pg 97	•			•					•		
 POLLOK 276S-001 S2 SRC Pg 88										•	
 PYTHON 269U-003 S3 SRC Pg 32	•		•	•		•	•	•			
 QUATTRO 245U-007 S3 ESD SRC Pg 34	•		•	•		•		•			
 RAGUSA FAST 969P-010 S3 M HRO SRC Pg 80	•	•			•				•		
 RAMBLER FAST 129BV-06 S3 WR HI CI HRO SRC Pg 58		•			•				•		

											
	BUILDING CARPENTRY	HEAVY INDUSTRY	LIGHT INDUSTRY	LOGISTIC TRANSPORT	OIL&GAS	AUTOMOTIVE HI-TECH	AIRPORT SYSTEM	HANDICRAFT	AGRICULTURE ZOOTECHNY	FOOD SECTOR CHEMICAL HEALTH	SPECIAL
 RANGER 987M-013 S3 HRO SRC Pg 84		•			•				•		
 RIO 989M-012 S3 HRO SRC Pg 84	•	•			•				•		
 RITA 244U-013 S1P SRC Pg 42	•		•	•		•		•			
 SCOTT 981S-004 S3 SRC Pg 94	•			•			•	•			
 SCRAMBLER 979U-002 S3 SRC Pg 50	•		•	•		•	•	•	•		
 SHELBY 980S-002 S3 SRC Pg 93	•		•	•			•	•	•		
 SIGFRID 203BB-01 S3 SRC Pg 71	•			•	•				•		
 SILVER 980S-004 S1P SRC Pg 94	•		•	•			•	•	•		
 SONORA 916P-018 S3 HI HRO SRC Pg 78	•	•			•				•		
 STELVIO 245U-005 S1P SRC Pg 38	•		•	•		•		•	•		
 STEWART 244U-010 S1P SRC Pg 35	•		•	•		•		•			
 SUMATRA 269U-007 S3 ESD SRC Pg 28	•		•	•		•		•			
 TARGA 244U-021 S3 ESD SRC Pg 35	•		•	•		•		•			

											
	BUILDING CARPENTRY	HEAVY INDUSTRY	LIGHT INDUSTRY	LOGISTIC TRANSPORT	OIL&GAS	AUTOMOTIVE HI-TECH	AIRPORT SYSTEM	HANDICRAFT	AGRICULTURE ZOOTECHNY	FOOD SECTOR CHEMICAL HEALTH	SPECIAL
 THOR 204BB-01 S3 CI SRC Pg 70					•				•		
 TIGER SNAKE 171BV-02 S3 WR CI HI HRO SRC Pg 63				•	•		•				
 TONGASS 248U-003 S3 ESD SRC Pg 28	•		•	•				•	•		
 TORO 978U-031 S3 ESD SRC Pg 51	•		•	•		•	•	•	•		
 TYPHOON 938I-011 S3 CI HI HRO SRC Pg 80		•			•				•		
 VEGA 142UV-02 S3 ESD HRO SRC Pg 54			•	•			•		•		
 VIKING 127BV-04 S3 WR CI HI HRO SRC Pg 58		•			•				•		
 VOYAGER 980S-003 S3 SRC Pg 93	•		•	•			•	•	•		
 WEST 978U-008 S1P SRC Pg 52	•		•	•		•	•	•			
 WOLFGANG 981S-006 S3 ESD SRC Pg 92	•		•	•			•	•	•		
 YOTO 978U-009 S1P SRC Pg 52	•		•	•		•	•	•			



PEZZOL

LAB

Today's consumer expectations and demands always generate new challenges for the footwear industry dedicated to safety at work. Guaranteeing the quality of our products is a duty to all our customers.

Pezzol Industries constantly invests in the training and qualification of its technical staff in order to develop and use increasingly advanced technologies. Research and development as well as the control of all footwear components takes place in the company's well-equipped and modern laboratory and focuses on three different levels

- Product development: all technologies and systems developed by our research team are tested in accordance with the relevant standards.
- Raw materials: purchased components and materials have to pass quality control protocols defined within strict, certified company procedures before being entered into the production process.
- Final product: general control of footwear performance before being placed on the market.

Carrying out tests on materials and components, as well as on finished footwear, ensures that PPE conforms to safety standards, and allows the performance of the product to be assessed and its quality to be improved.





Below is a selected list of the main tests carried out in our laboratory:

- Shoe impact resistance: a weight hits the toe of the shoe with known energy;
- Footwear compression resistance: measures the ability of the toe of the shoe to protect the foot from a known compressive load;
- Footwear perforation resistance: tests the ability of the bottom of the shoe to protect the sole of the foot from perforation;
- Electrical resistance;
- Resistance to water absorption and penetration i.e. testing the water repellent characteristics of materials;
- Characterisation of the product in hostile environments: high and low temperatures;
- Resistance to tearing, abrasion and bending;
- Breathability performance of materials;
- Analysis and strength of seams;
- ESD compliance;
- Product evaluation using GORE-TEX standards.

Periodic calibration and regular calibration of the equipment guarantee the efficiency and reliability of the results and their repeatability. Our laboratory ensures accurate tests and consequently products that meet all relevant standards and even exceed reference values.

We work in cooperation with internationally accredited institutes such as Satra, Cimac and PFI, which is why customer loyalty and satisfaction are reinforced.



INSTRUCTIONS FOR USE

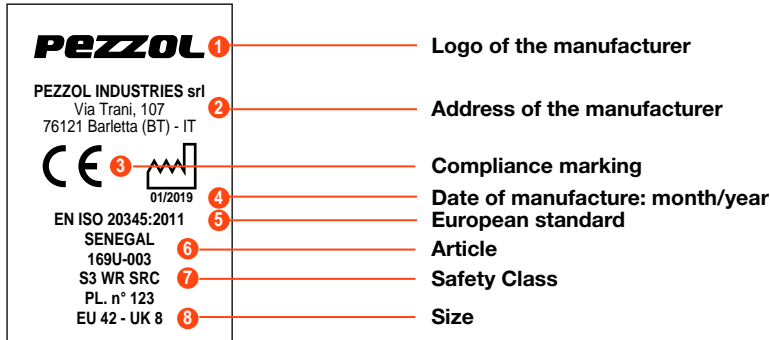
Dear Customer,

Thank you for choosing our footwear, PEZZOL Industries srl delivers all over the world high quality footwear since more than 50 years.

We strongly recommend you to keep this instruction of use for the whole lifetime of this Personal Protective Equipment (PPE), and to look through it carefully.

None of the materials used for making this footwear are hazardous to health. This footwear comes under the Category II PPE (Personal Protective Equipment) complying with the

EU-Regulation 2016/425 and to Directive 89/686. Here follows is the meaning of the marking codes you will find on the footwear either under the sole or on the tongue. As an example:



Compliance marking

The CE marking guarantees the free trade of products and goods within the European Union. The CE marking means that the product meets the main requirements of the Regulation EU 2016/425 and of the Directive 89/686.

The meaning of the European Standards:

EN ISO 20344:2011 Test methods;

EN ISO 20345:2011 Specifications for safety footwear with impact and compression resistance up to 200 J; Footwear conform to EN ISO 20345:2011 norm are marked by an "S" (stands for Safety).

The basic safety is marked by "SB" (S=Safety - B=Base). This footwear must have the following minimum requirements: height of the uppers; toe cap (minimum length, minimum seat region); uppers of suede leather and/or similar; vamp lining; foot bed; sole made of any kind of material, may be smooth; the uppers of low-cut footwear may be open. The "SB" footwear never includes the following requirements unless specifically stated: antistatic properties; absorption of the energy in the heel area; upper with dynamic waterproofing properties; anti-slip sole; cleated sole; back lining; full grain leather upper; perforation resistant insert.

EN ISO 20346:2014 Specifications for protective footwear with impact and compression up to 100 J;

Footwear conform to EN ISO 20346:2014 norm are called "Protective Footwear". They are substantially identical to the Safety Footwear. The only differences are the following: protective toecap against impacts up to 100 J; they are marked with a "P" (stands for "Protective") instead of an "S" (Safety Footwear). Note: they must be used only in workplaces where impact resistance up to 100J and compression resistance up to 10kN is requested;

EN ISO 20347:2012 Specifications for occupational footwear. No specific impact and compression resistance;

Footwear conform EN ISO 20347:2012 norm are called "Occupational footwear". They are substantially identical to the footwear above.

The difference is that they do not have any protective toecap. They are marked by the letter "O" (stands for "Occupational") instead of the letter "S" and "P". They are identified as OB, O1, O2, O3.

Footwear with additional requirements may carry the following identifying letters:

	EN ISO 20345:2011			EN ISO 20346:2014				EN ISO 20347:2012				Minimum values requested EN ISO 20345/6/7
	SB	S1	S2	S3	PB	P1	P2	P3	OB	O1	O2	
Closed seat region	◊	●	●	●	◊	●	●	●	◊	●	●	●
A Anti-static footwear	◊	●	●	●	◊	●	●	●	◊	●	●	●
E Heel energy absorption	◊	●	●	●	◊	●	●	●	◊	●	●	●
WRU Dynamic waterproofing of the uppers	◊	◊	●	●	◊	◊	●	●	◊	◊	●	●
P Perforation resistance	◊	◊	◊	●	◊	◊	◊	●	◊	◊	◊	●
CI Cold insulation	◊	◊	◊	◊	◊	◊	◊	◊	◊	◊	◊	◊
HI Heat insulation	◊	◊	◊	◊	◊	◊	◊	◊	◊	◊	◊	◊
C Conductive footwear	◊	◊	◊	◊	◊	◊	◊	◊	◊	◊	◊	◊
HRO Heat resistance on contact	◊	◊	◊	◊	◊	◊	◊	◊	◊	◊	◊	◊
M Metatarsal protection	◊	◊	◊	◊	◊	◊	◊	◊	◊	◊	◊	◊
WR Water-resistant footwear	◊	◊	◊	◊	◊	◊	◊	◊	◊	◊	◊	◊
FO Outsole resistance to hydrocarbons	◊	●	●	●	◊	●	●	●	◊	◊	◊	◊

Mandatory requirements

Optional requirements, in addition to mandatory ones, if stated on the marking

The EN ISO 20345:2011, EN ISO 20346:2014 and EN ISO 20347:2012 guarantee:

-The right level of comfort and solidity as stated in the European harmonized regulation

-The presence of a protection toecap able to provide protection against impacts when tested at an energy level of 200J (EN ISO 20345:2011) or 100J (EN ISO 20346:2014) and against compression hazard with a maximum load of 15000 N, that is approximately 1500 Kg. (EN ISO 20345:2011) or 10000 N, that is approximately 1000 Kg. (EN ISO 20346:2014). Room available after the damage: 14 mm in size 42.

-The Symbol P indicated the presence of an anti perforation insert. The resistance to perforation has been tested in a laboratory by applying a force of 1.100 N to a nail 4,5 mm in diameter. Bigger forces or smaller diameter nails can increase the risk of perforation. In this case, alternative preventive measures must be taken. There are currently two types of perforation resistance insert for footwear (DPI). They may be metallic or non-metallic. Both types of insert meet the minimum requirements of perforation resistance stated by the standards and shown on the footwear, but each of them has different advantages and disadvantages:

Metallic perforation resistant insert: the puncture resistance is less affected by the shape of the sharp object (i.e. the diameter, geometry, pointed shape), but it does not cover the whole surface of the lower part of the footwear, due to limitations in the size required for the production of footwear.

Non-Metallic perforation resistant insert: it can be lighter, more flexible and provide a greater coverage area when compared with the metal ones, but the resistance to the perforation can vary depending on the shape of the sharp object (i.e. the diameter, geometry, pointed shape). For further information on the type of midsole used in this footwear, please contact the manufacturer or the distributor indicated in this notice of use.

-Footwear conform to EN ISO 20347:2012 do not guarantee any protection by the toecap and therefore are unable to protect the foot against impact and compression hazards.

Marking for slip resistance:

The footwear meets the provisions of the above EN ISO standards in terms of anti-slip sole resistance. Initially, the new footwear may have a lower anti-slip resistance as compared to the one indicated by test results. Afterwards, the footwear anti-slip resistance may change depending on the wearing of the sole. Compliance with the specifications does not guarantee anti-slip resistance in all conditions.

SYMBOL	MINIMUM REQUIREMENT
SRA Test floor: Ceramic Tile Lubricant : Lauryl sulphate (NaLS) solution	0,32 forward flat slip 0,28 forward heel slip (7 degrees incline)
SRB Test floor: Steel Lubricant : Glycerine	0,18 forward flat slip 0,13 forward heel slip (7 degrees incline)
SRC	SRA+SRB Requirements

Packaging, preservation, maintenance:

The shoes are packaged in boxes and must be stored in warehouses at room temperature. To ensure a longer life, clean the footwear after use:

- Clean the footwear using brushes with soft bristles, carefully removing all earth or other residuals;
- Do not machine wash if not otherwise stated on catalogue or additional documentation;
- Treat the non suede uppers regularly with a suitable polish, e.g. grease, wax, etc. Do not use aggressive products (benzene, acids, solvents, etc.), which could compromise the quality, safety and life of the PPE;
- Wet footwear must be allowed to slowly dry in a ventilated area, far from sources of heat.

Expiring date:

Due to many factors that can influence the storage life of the footwear (dampness, temperature, etc.), it is impossible to accurately determine their duration. In general, for the footwear with outsole entirely made of polyurethane or with polyurethane midsole the duration is generally esteemed up to 3 years.

Product checking and control before use:

Before wearing the shoes, please make sure that all the components are intact and that they are provided with a removable insole.

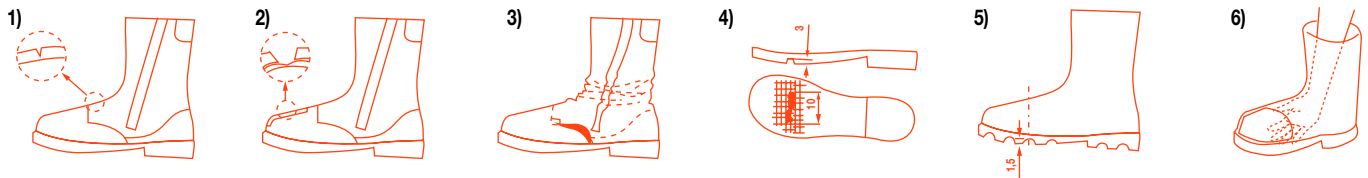
The selected footwear must meet the protection standards required by the intended field of application.

The choice of the right shoes must be based on the kind of danger you may incur. You must verify that the features indicated in the stamping reflect those requested by the work environment. In case of doubts you can ask for further information to your responsible for safety. The employer takes the responsibility to choose the right shoes in regards to the risk.

Instructions for the evaluation of the damage:

When any of the following issues occurs, the shoes must be replaced:

- Starting of relevant cracks whose depth is half the thickness of the upper. (picture nr. 1)
- Strong abrasion of upper material, especially when the protective toe cap remains uncovered (picture nr. 2)
- The upper material presents deformations in some areas, signs of burns and melting of the material, or bubbles or loose seams (picture nr.3)
- The outsole has cracks over 10 mm wide and over 3 mm deep (picture nr. 4)
- Sole cleats height lower than 1.5 mm. (picture nr. 5)
- Manual control inside the footwear in order to check for damages (picture nr. 6)
- The lacing /releasing system does not work properly.
- In case of impact and / or perforation you must replace the whole footwear, even if it is apparently not damaged.



Antistatic Footwear:

Antistatic footwear must be used when it is necessary to minimize electrostatic charges by partially discharging them in order to prevent the danger of combustion, for example of flammable materials and vapours, in cases where the risk of electric shock from electrical devices or live mains voltage parts cannot be completely excluded. In any case, it should be stated that antistatic footwear does not provide sufficient protection against electric shock, since it only creates resistance between the floor and the foot. If one cannot completely rule out the danger of electric shock, precautions must be taken to remove this danger. These precautions and the tests described below should be part of a routine accident prevention programme at the workplace. Experience demonstrates that, in normal conditions, discharge through a product occurs with an electrical resistance below 1,000 M at any time of the product's life. The lower resistance limit of a new product is set at a value of 100k , so as to ensure a certain level of protection against dangerous electric shocks or combustion, in the event of faults of electrical devices with a maximum voltage of 250V. However, users must be aware that in certain conditions the footwear protection could be ineffective and it may therefore be necessary to adopt other measures to fully protect the wearer at all times. The electrical resistance of this kind of footwear can be considerably modified if the shoe is bent, soiled or subject to moisture. This kind of shoe does not fulfil its functions if it is worn in a wet area. It is therefore useful to do everything so that the product can carry out its function of discharging electrostatic charges throughout its lifetime. The user is therefore advised to regularly carry out a practical electrical resistance test on site. If the shoe is worn in conditions which favour the contamination of the material of the sole, the user should check the electrical features of his footwear every time before going into a hazardous environment. In areas where antistatic footwear is used, the resistance of the sole should be such as not to cancel the protective function of the footwear. By using antistatic footwear no insulating material should be placed between the underfoot of the footwear and the foot of the user. Should an insock be placed between the underfoot and the foot of the user, the electrical behaviour of the footwear / sole should be checked.

Removable insock:

The footwear has been tested by the laboratory with its own insock. Should the user need to replace it, it is important to replace it with similar ones provided by the manufacturer, in order to keep the protective properties of the footwear. Safety shoes and work shoes, which need to be modified orthopaedically, may only be modified with insock and materials which are certified by the manufacturer. Please ask the manufacturer to check this possibility.

Disposal:

The following materials are considered non-dangerous industrial waste, and are identified by the European Waste Code (EWC).

- Leather: 04.01.99
- Fabric: 04.02.99
- Cellulose material: 03.03.99
- Metal 17.04.99 or 17.04.07
- Supports covered with PU and PVC, elastomeric and polymeric material: 07.02.99.

Harmlessness:

These shoes are produced by using raw materials that comply with the REACH-Regulation.

Certification Institute:

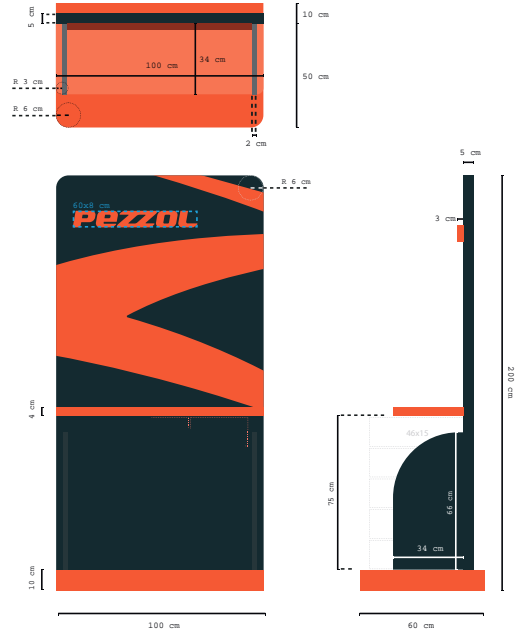
0465 ANCI Servizi Srl - Sez. CIMAC - Via Aguzzafame, 60/b - I-27029 VIGEVANO (PV) - ITALY
0193 PFI - PRÜF und Forschungsinstitut - Pirmasens e.V. - Marie-Curie-Str. 19 - 66953 PIRMASSENS - GERMANY
0197 TÜV Rheinland LGA Products GmbH - Tillystraße 2 - 90431 NÜRNBERG - GERMANY



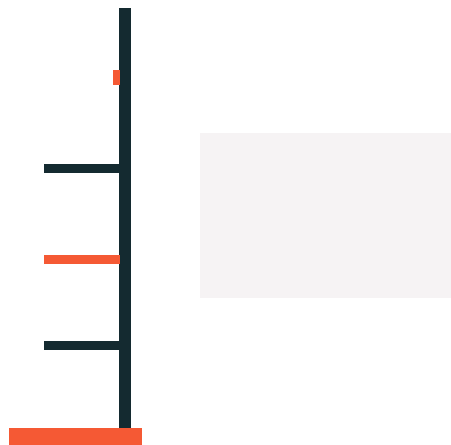
Floor display - module 1



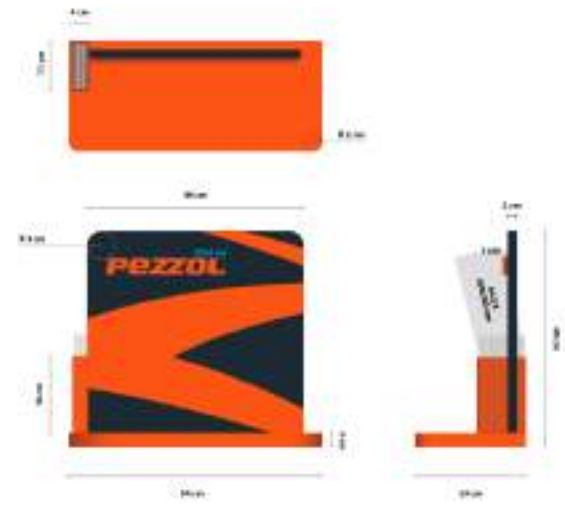
Floor display - module 2



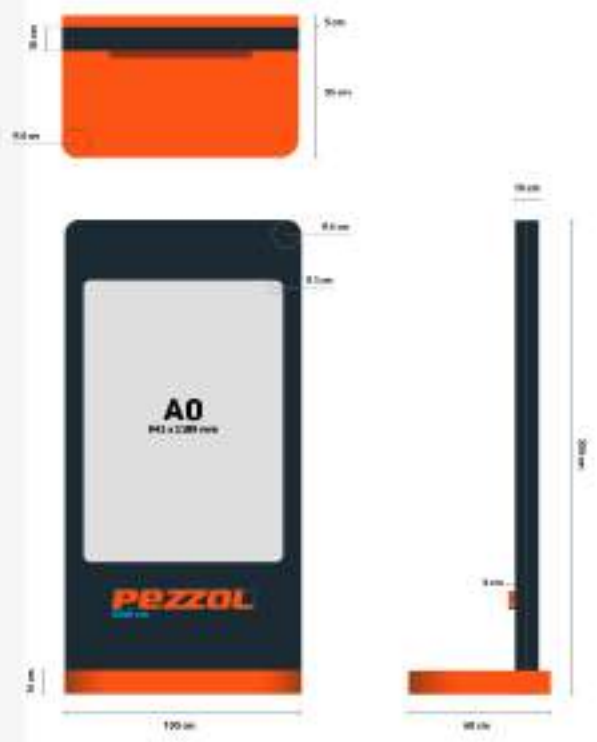
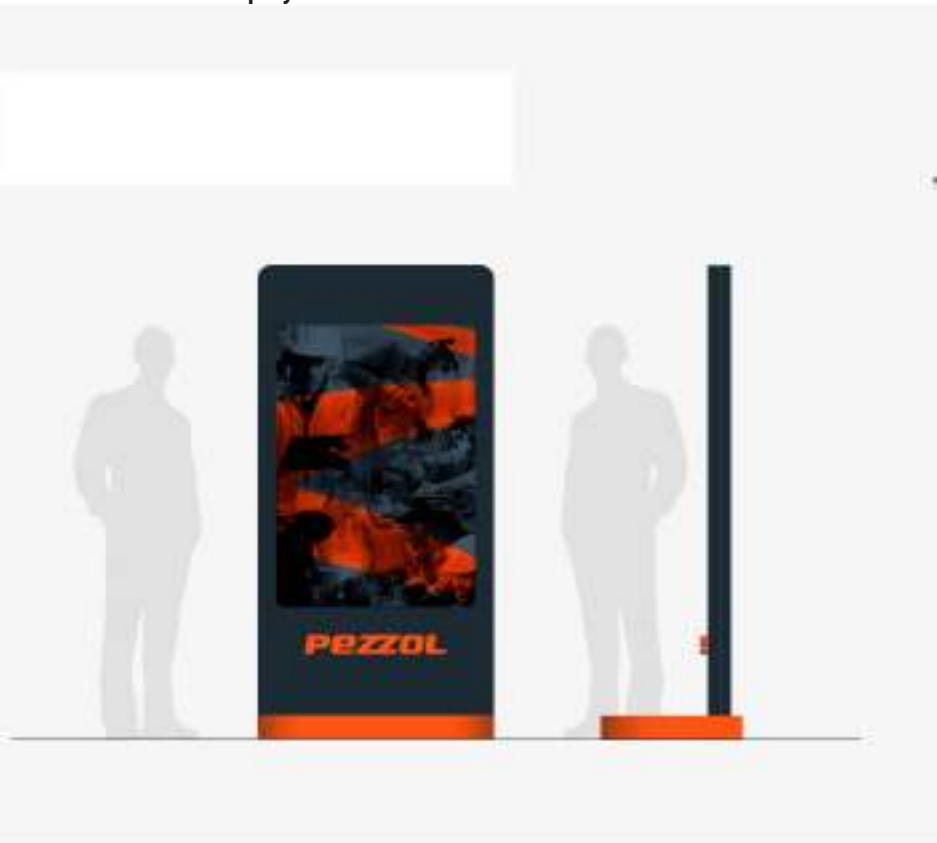
Floor display - module 2B



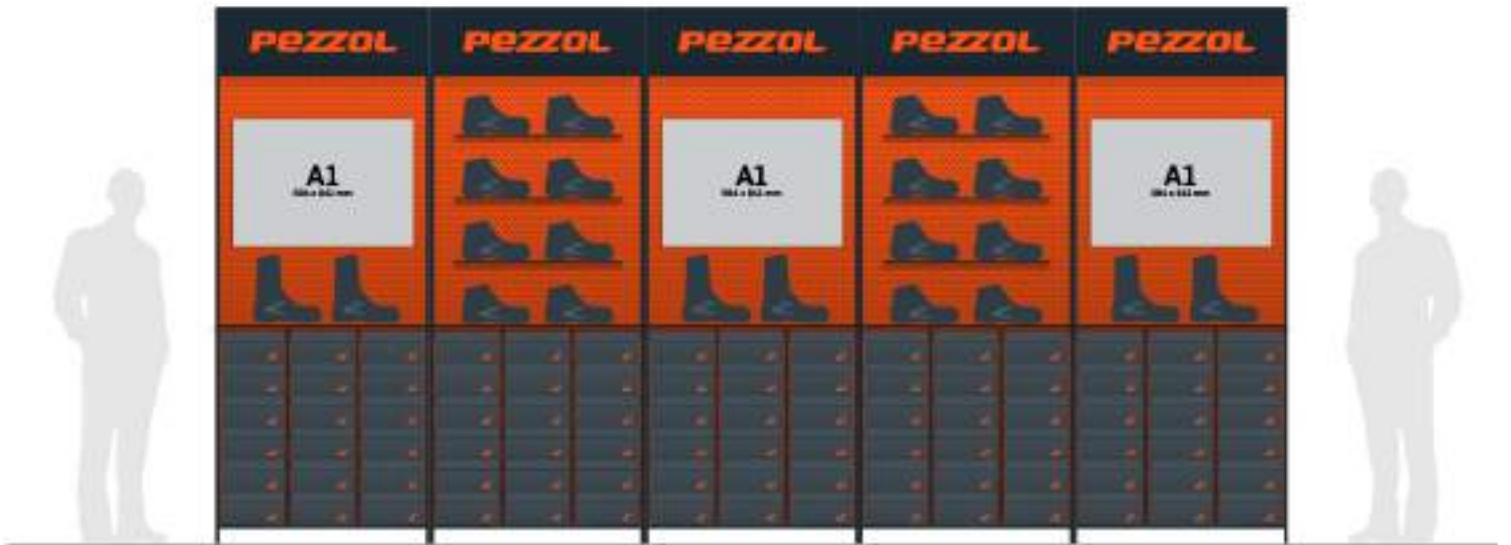
Counter display with postcard pocket



Floor display module 3



 Example composition



 Example composition



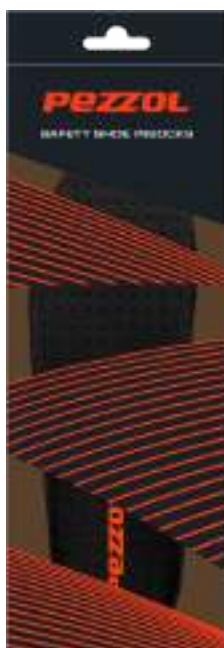
 Soccer T-shirt



 Baseball hat



 Blister



M-01



B-01



Pezzol® and the Z logo are trademarks of Pezzol Industries srl.
GORE-TEX and the GORE-TEX logo are trademarks of W.L. Gore & Associates GmbH.
Vibram® and the Vibram® logo are trademarks of Vibram SpA.
The Boa® fit system and the Boa® fit logo are trademarks of Boa Technology, Inc.
PU Tek Hypertek is a trademark of Lenzi Egisto® - FF Srl.
Thinsulate® and the Thinsulate® logo are trademarks of 3M Company.
XRD® and the XRD® logo are trademarks of Rogers Corporation.

Pezzol Industries srl reserves the right to modify the characteristics of the products in this catalogue at any time and without prior notice, therefore the information given may be subject to change without notice.

INTROD

TRAD

INNOV

MADE IN

SAF

TECHNO

DUCTION

DITION

VATION

ITALY

FETY

DLOGY



DISTRIBUTED BY



CAT2023INTL